

# SKODA



The new  
**Octavia**



[contents](#)

**Octavia**  
**Sportline**  
**RS**

**Accessories**  
**Accessories Wheels**

**Technical Data**



## There's still plenty to explore

Every journey in life leads to new discoveries. Embark on your next adventure with the enhanced Škoda Octavia. Experience advanced technology that empowers you to work and live smarter.

The latest Octavia offers more than just an updated appearance. The new materials used in the interior are designed to be more pleasant to the touch and environmentally friendly. Enhancements such as Ergo seats provide superior comfort, even on the longest drives.

From a technological perspective, the interior features two prominent, larger screens – a 10" Virtual Cockpit and a 13" Škoda Infotainment system. These displays provide a comprehensive overview of the Octavia's new features, including the latest generation of parking assist technologies.

The engine lineup continues to feature the reliable TDI and TSI engines, now with mild hybrid options available. At the top of the range is the powerful RS version, which seamlessly blends practicality with exhilarating performance.

That's the smart way of working and living. That's what we call Škoda.







## Classic with a sharp edge

A crystalline signature on a timeless shape. The new Octavia retains all the sleekness, space and practicality it is known for and adds a crisper style.



## Spacious in style

The distinctive light signature of the LED headlights and wide, imposing grille give the updated Octavia a new, characteristic look. At the same time, it retains its classic shape and legendary functionality, including the largest

luggage space in class. Once again, the Octavia shows that you actually can have it all – great looks, effective aerodynamics and lots of practicality.





#### LED Matrix beam headlights

Crystal clear view with a Crystallinium style. LED Matrix beam headlights provide great visibility even with other cars around and now, with 36 LED segments instead of 24, they offer even finer precision. The coloured crystalline element accentuates the sharp contours of the headlights, adding a touch of elegance and visual appeal.

#### LED rear lights with animated indicators

With crystalline elements inside, the LED rear lights with animated indicators create an unmistakable and easy-to-recognize visual signature. This look is underscored by the use of full LED technology and the dynamic turn signals, which illuminate sequentially in the direction you are turning.





#### **Virtual Pedal with Easy Close**

Opening and closing the boot is effortless, even when your hands are full. Simply make one forward kicking motion under the bumper to open the boot and kick again to close it. The boot waits for you to step away, giving you ample time to load or unload your luggage. This feature is available with KESSY and the power-operated boot.

#### **Walk-away KESSY**

Never worry about forgetting to lock your car again. The new walk-away function of the Keyless Entry Start and Exit System not only allows you to lock and unlock your car by touching the front door handles, but it also automatically locks the doors when you walk away with the key.





## Enhanced space

Still as spacious as ever, now even more modern and luxurious. The new, larger screens provide a gateway to the digital world. Crafted from the finest sustainable materials, the interior is forward-looking while staying true to Škoda's best traditions. Ambient lighting enhances the unique atmosphere of the interior and highlights numerous smart details.





## Ultimate information hub

See what you need, when you need it. With the Head-Up Display, 10" Virtual Cockpit, and 13" Škoda Infotainment system, the new Octavia ensures you stay informed, prioritizing information by importance.



### Infotainment screen

The world at your fingertips. With a 13" touchscreen, the new Škoda Infotainment offers an even clearer way of displaying all the information and entertainment features. The new generation of the MIB system is not only smoother and faster in operation, but also offers new functions, like the Heaters button that makes it easy to activate all or selected heated features – front/rear windscreens, seats and steering wheel – by just one tap.

### Head-Up Display and Virtual Cockpit

All the key information right in front of you. The 10" Virtual Cockpit offers driving data in easy-to-comprehend, customisable view. In addition, the Head-Up Display can be ordered, showing the most crucial information and navigation guidance right on the windshield.





## Take the online world with you

Stay connected wherever you are. Being fully and permanently online means always having access to entertainment, information, and possible assistance while on the move. Škoda Connect is your gateway to a world of unlimited communication options.



### Always connected

The infotainment screen is not just larger than ever before. It also offers access to even more features, like the set-up for improved ambient lighting, in a brand-new, smooth virtual environment. Explore the world in a digital way.

### MyŠkoda

Enjoy full control of your car. Download MyŠkoda application and access all necessary services anytime, whether it's driving data, fuel range, lock and unlock or even where you last parked.





## Smart tricks for a better day

It's the small things that make a difference. Details that help you focus on what's really important. A way to sleep comfortably on the road and arrive refreshed. Places to put your things so you have them always on hand. Ways to live smarter.



### Sleep package

To make sleeping on the road comfortable, Octavia can be fitted with Sleep Package. It includes headrests with adjustable sides so that the passengers on rear outboard seats can relax during long journeys. The package includes a snug blanket.

### Storage compartment

Even rear passengers can now have everything they need easily on hand. The removable storage compartment fits over the centre tunnel and offers space for smaller items, phones or drinks.





## Space to fit your world

Ample space is just the beginning. We've equipped it with practical features and smart innovations to help you make the most of it. Everything has a designated place, and all your belongings stay where you want them.



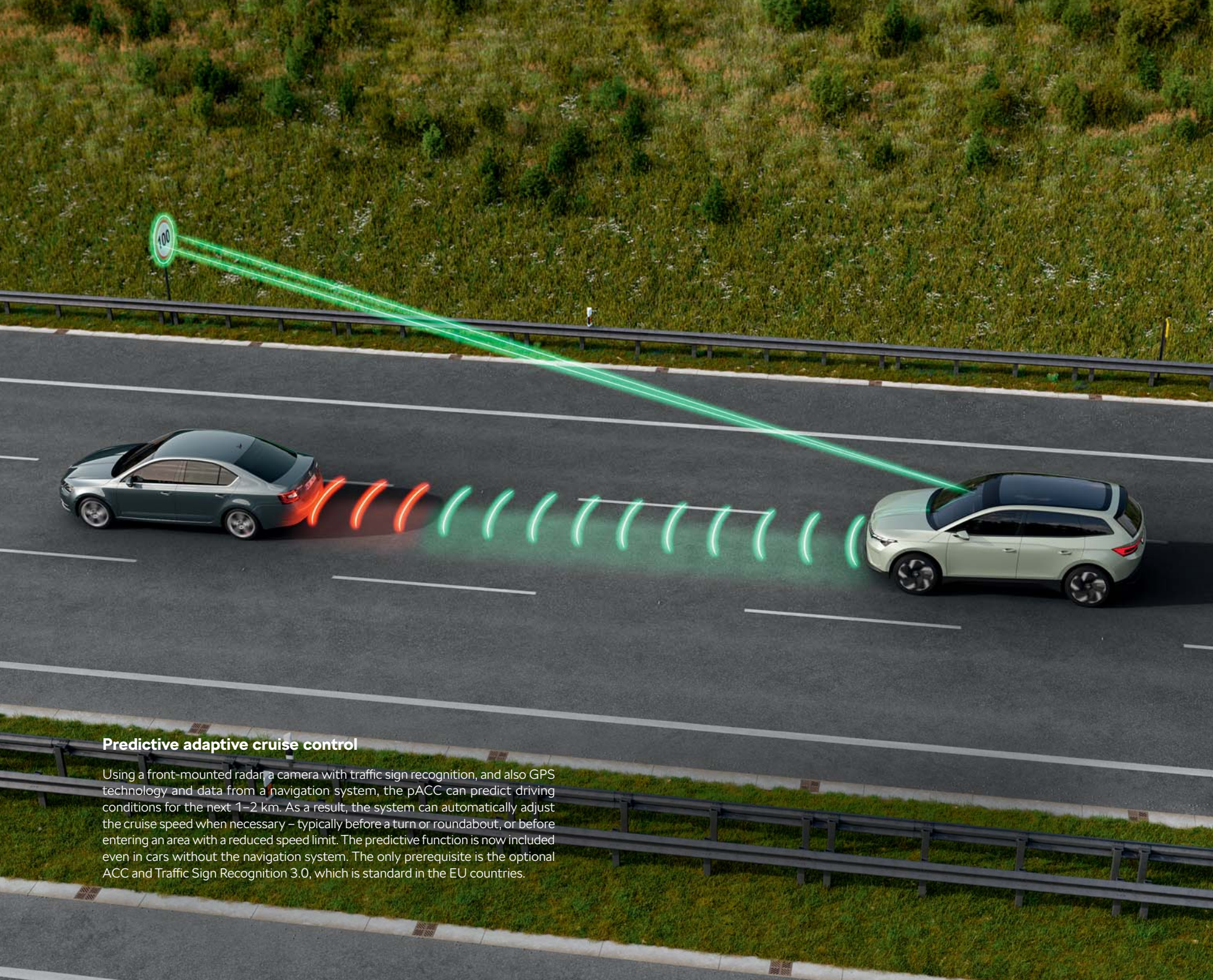
### Luggage room

The luggage compartment sets the standard with an impressive volume of 600 liters (640 liters for the Combi). Now featuring even smarter solutions such as a net system, practical hooks, and cargo elements.

### Multifunctional pocket

The convenient pocket beneath the roller cover is perfect for storing items like jackets or handbags, keeping smaller belongings easily accessible and separate from the rest of the boot. The multifunctional pocket now features two new versatile hooks, each capable of supporting up to 2 kg, enhancing the practicality of your storage options.



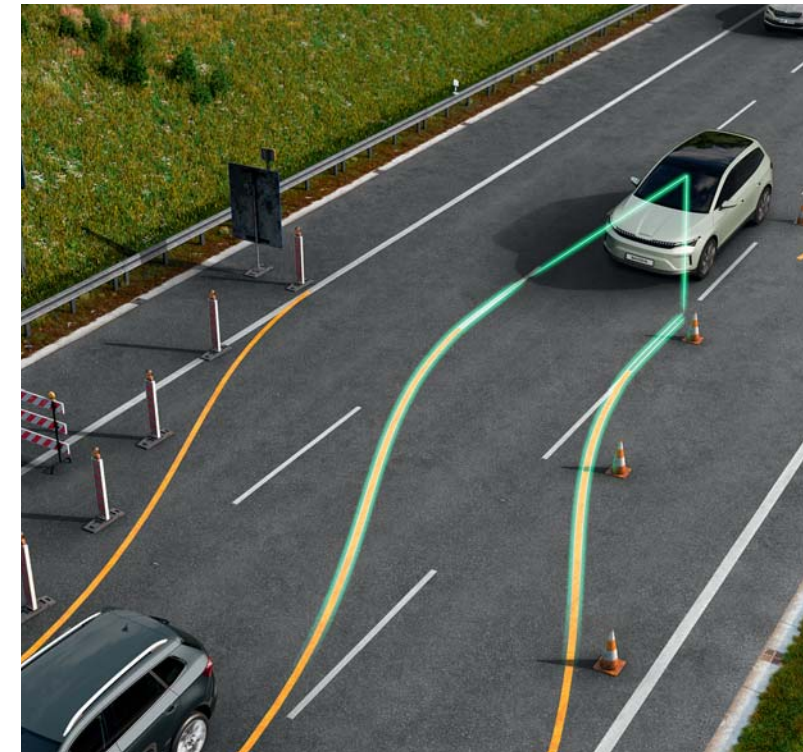


### Predictive adaptive cruise control

Using a front-mounted radar, a camera with traffic sign recognition, and also GPS technology and data from a navigation system, the pACC can predict driving conditions for the next 1–2 km. As a result, the system can automatically adjust the cruise speed when necessary – typically before a turn or roundabout, or before entering an area with a reduced speed limit. The predictive function is now included even in cars without the navigation system. The only prerequisite is the optional ACC and Traffic Sign Recognition 3.0, which is standard in the EU countries.

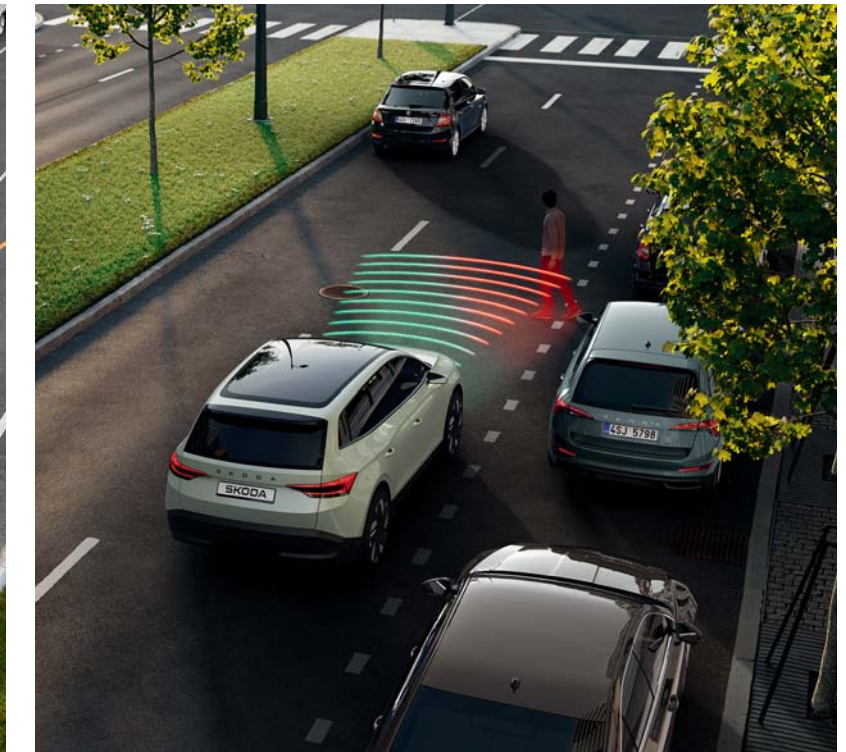
## Safer. Easier. Smarter.

The Travel Assist system combines Adaptive Cruise Control (including Front Assist) and Adaptive Lane Assist functions. For maximum safety, the system must be constantly monitored by the driver. That's why a capacitive steering wheel detects the driver's tactility, providing an interactive interface to the system. If the driver is not engaged in driving, the system issues a visual and audible warning and eventually disengages.



### Adaptive Lane Assist

The system is capable of keeping the car in the middle of the correct lane and of alerting the driver in case of deviation. It can also take control of the car in the event of lane changes during roadworks.

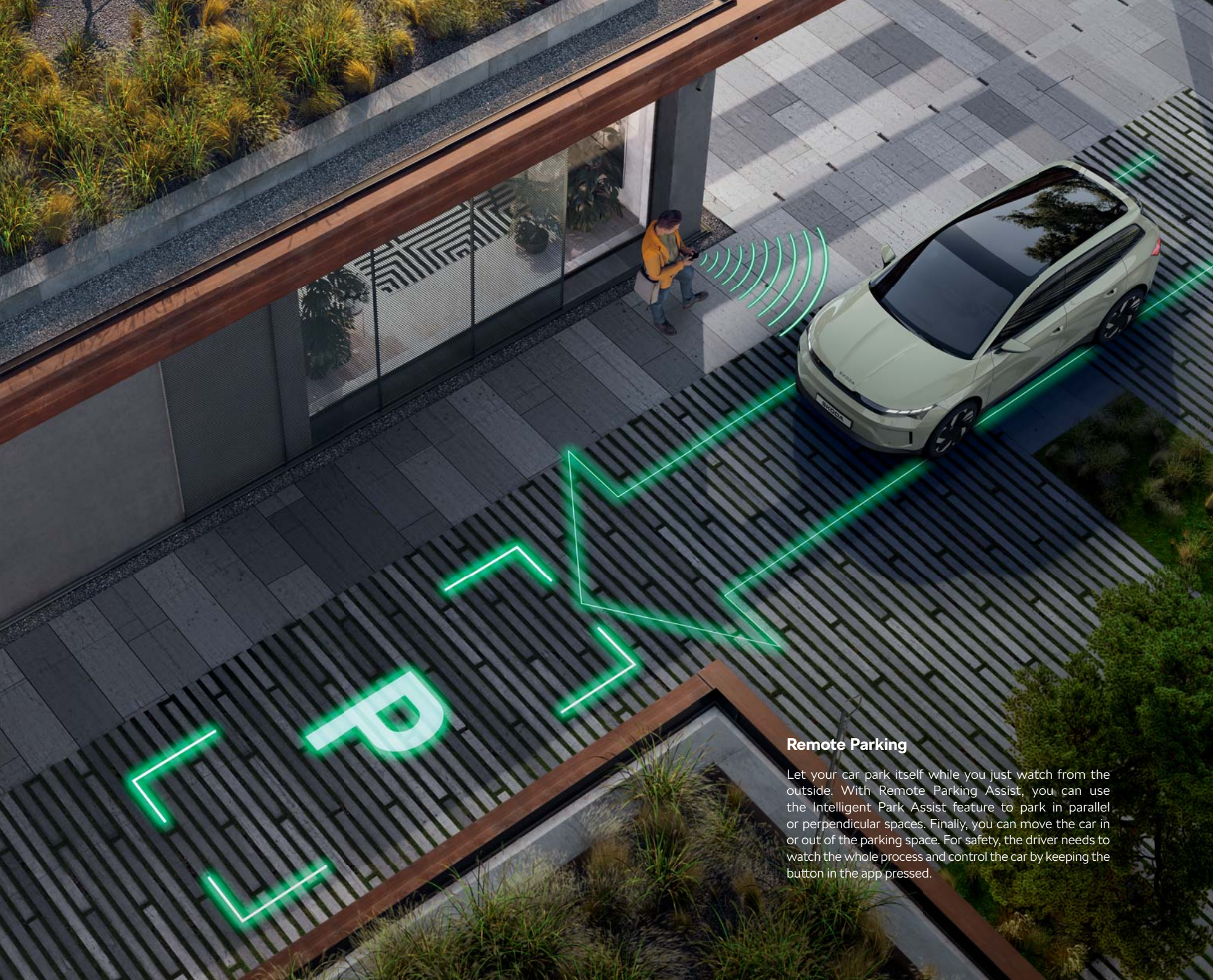


### Front and rear assist with pedestrian protection

It's easy to overlook a pedestrian or a cyclist when reversing. With the combination of ultrasound sensors and closerange cameras, this system warns driver of pedestrians that might appear not only in front of the car, but also behind it. Using rear corner radar sensors, it can also detect fast approaching road users from the sides. If the collision is imminent in any case, the system will initiate emergency braking.

This is an illustrative image depicting an assistance system feature and does not represent any specific Škoda model.



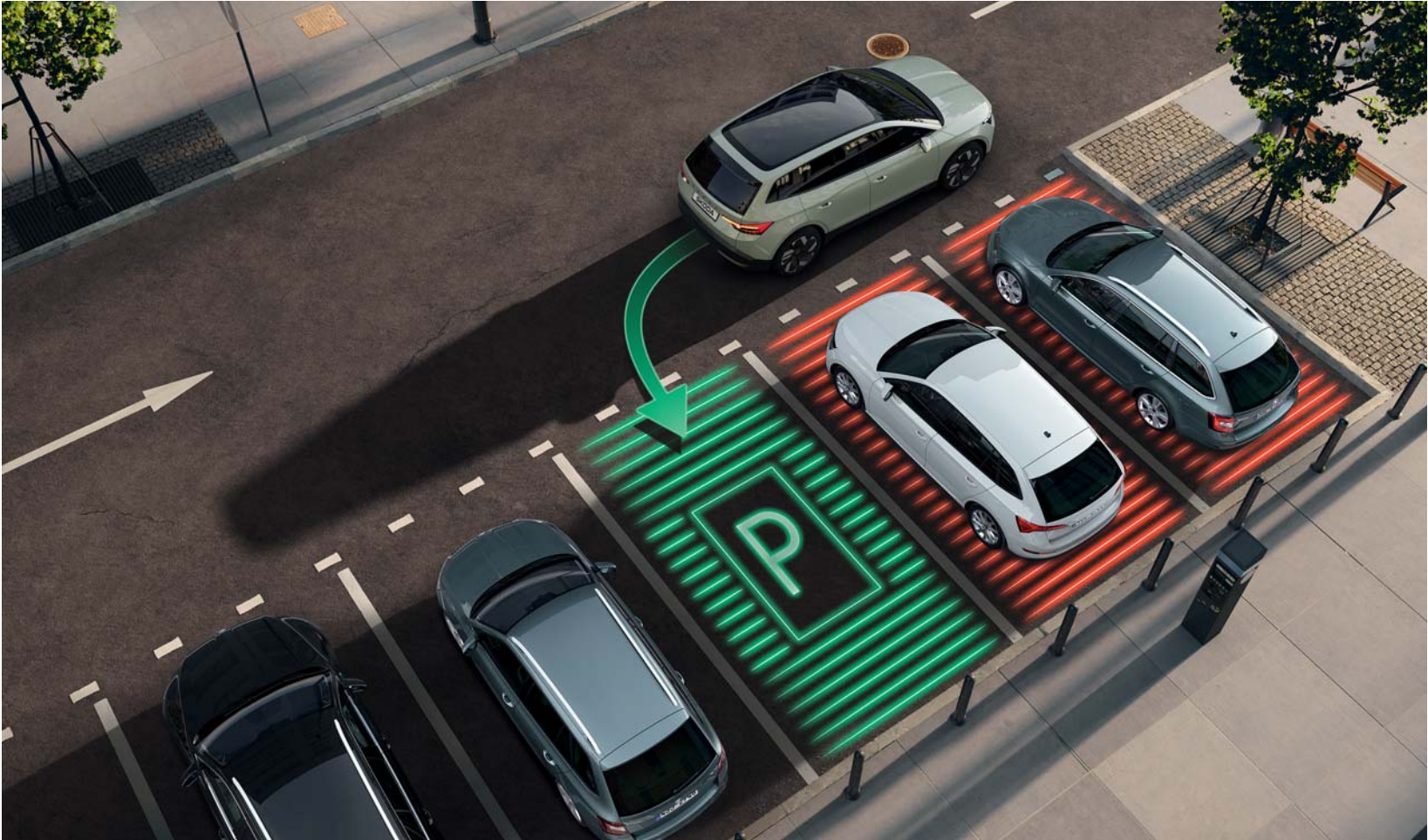


### Remote Parking

Let your car park itself while you just watch from the outside. With Remote Parking Assist, you can use the Intelligent Park Assist feature to park in parallel or perpendicular spaces. Finally, you can move the car in or out of the parking space. For safety, the driver needs to watch the whole process and control the car by keeping the button in the app pressed.

## Parking smarter is parking safer

Could parking be any easier than fully automatic? The new Octavia is able to find you a space and park in it, without you even being in the car. It can also be taught to park in a spot of your choosing.



### Intelligent Park Assist\*

Let your car find and offer you parking spaces. Select one and then just sit back and watch. The Octavia will autonomously drive itself into the parking space, without the driver having to touch the wheel or pedals.

\* Only with DSG.

This is an illustrative image depicting an assistance system feature and does not represent any specific Škoda model.





### Studio interior

Grey/Black fabric upholstery  
Narbe ruby pad  
Silver squares haptic dashboard décor  
Piano Black door décor

## Essence

Even as standard, the Essence version is fitted with a rich list of equipment. This includes, for example: 2-zone Climatronic , 10" Digital display and 10" Infotainment, leather multifunction steering wheel, four USB-C ports and cruise control. The Essence trim is available with the Studio interior design selection.



### Studio

Grey and black fabric seat upholstery with Silver squares haptic dashboard décor, together with Narbe Ruby dashboard pad, and Piano Black door décor create a feeling of timeless elegance.





### Loft interior

Grey/Black fabric upholstery  
Narbe ruby pad  
Silver squares haptic dashboard décor  
Piano Black door décor

## Selection

Standard equipment for the Selection version includes for example 2-zone Climatronic and 10" digital instrument panel and 10" Škoda Infotainment, leather multifunction steering wheel, four USB-C ports, wireless charging and cruise control. The Selection trim is available with a choice of five interior design selections.



### Loft

With a combination of black/grey fabric seat upholstery and Silver Squares haptic dashboard décor, Narbe Ruby pad and Piano Black door décor create a stylish, elegant look of the cabin.





### Lodge interior

Melange recycled fabric/leatherette upholstery  
Krepp recycled fabric pad with Mochaccino stitching  
Mutant cocoon silver dashboard décor  
Piano Black door décor

## Selection



### Lodge

The seat upholstery in a combination of Recycled Melange fabric and black artificial leather is set off by the recycled Krepp fabric dashboard pad and Mutant Cocoon silver dashboard décor with Piano black door to create a smart, sustainable and attractive feeling in the cabin.





### Lounge interior

Black Suedia/leather/leatherette upholstery  
 Artisyn black pad with grey stitching  
 N-tactile lines dashboard décor  
 Unique Dark Chrome door décor

## Selection



### Lounge

Seat upholstery in combination of the black Suedia, leather and leatherette and Artisyn dashboard pad together with Artisyn dashboard pad with grey stitching and N-tactile lines dashboard décor in combination with Unique Dark Chrome door décor, create a smart, luxurious look.





### Suite Black interior

Black perforated leather/leatherette upholstery  
Leatherette black pad with grey stitching  
Carbonised cork dashboard décor  
Unique Dark Chrome door décor

## Selection



### Suite Black

AGR seats with black perforated leather and leatherette upholstery with Carbonized Cork dashboard décor and Black leatherette dashboard pad with grey stitching along with Unique Dark Chrome door décor create a stylish, elegant atmosphere on board.





### Suite Cognac interior

Cognac perforated leather/leatherette upholstery  
Leatherette cognac pad with grey stitching  
Diacut Cross dashboard décor  
Unique Dark Chrome door décor

## Selection



### Suite Cognac

AGR seats with cognac perforated leather and leatherette upholstery with Diacut Cross dashboard décor and Cognac leatherette dashboard pad with grey stitching along with Unique Dark Chrome door décor give the interior an attractive, sumptuous look and feel.





Sportline





## Sporty flair

No matter where you go, enjoy the journey in style. The new Octavia Sportline blends a sleek, dynamic exterior with enhanced driving performance and advanced technology. Elevate every drive you take!



### Dynamic looks, dynamic drive

Enjoy the drive and look the part. The Octavia Sportline catches the attention with its front aerodynamic spoiler and rear diffuser, gloss black grille and trim, as well as exclusive alloy wheels and LED headlights.

The drive is even better with the Performance Package, which includes progressive steering and lowered sports suspension. And now you can get the Sportline with a tow bar too!





## Something just for you

This is just about you and your passengers. Settle yourself in the fabric and artificial leather sports seat, grab the perforated leather multifunction steering wheel and place your feet on the aluminium sports pedals. The Carbon look dashboard and piano black door décor, leatherette dashboard pad and the cool black headliner complete the driving-focused atmosphere. The 10" Virtual cockpit will serve you all the necessary information, while the KESSY Advanced will make entering your driving world easy. This is all about the drive.





### Sportline interior

Grey recycled fabric/ black leatherette upholstery  
Leatherette black pad with grey stitching  
Carbon dashboard décor  
Piano Black door décor

## Sportline



### Sportline

Front Sport seats with upholstery in a combination of grey recycled fabric and leatherette with Carbon dashboard décor and black leatherette dashboard pad with grey stitching along with Piano black door décor and black headliner are a combination of sport and sustainability.





RS





## Rally genes for every day

Created for those who demand the best possible drive. Everything we learned in decades of motorsport, infused into an everyday family car.



### Dynamic drive

With its 2.0 TSI / 195 kW engine, this is the most powerful Octavia, ever. With progressive steering, it dives into the corners lightning quick, while the sports suspension keeps it planted to the road. The sports exhaust is here for a proper soundtrack. But the looks matter, too. The LED Matrix

headlights, the aerodynamic front bumper and wide, black grille with unique RS badge create a face to remember. In the rear, the aerodynamic bumper with black diffuser is complemented by a black spoiler. The 18" wheels in exclusive designs are standard.





## RS

This is where the real driving excitement begins. The RS interior is crafted with the driver in mind, letting you fully experience the power and performance of the Octavia RS. It features a three-spoke, perforated leather, multifunction RS steering wheel, RS sports seats available in fabric or Suedia, and sleek aluminum sports pedals. The neoprene or Suedia dashboard pad and black headliner create a focused atmosphere. Plus, there's a long list of equipment to keep you comfortable, whether you're cruising or putting your foot down.





### RS interior

Black fabric upholstery  
Neoprene black pad with red stitching  
Carbon dashboard décor  
Piano Black door décor

## RS



### RS

Front Sport seats with black fabric upholstery with Carbon dashboard décor and Neoprene black dashboard pad with red stitching along with Piano Black door décor along with black headliner ensure the sporty character of the interior.





### RS Suedia interior

Black Suedia/Leatherette upholstery  
 Leatherette black pad with red stitching  
 Carbon dashboard décor  
 Piano Black door décor

## RS



### RS Suedia

Front sport seats with upholstery in a combination of Suedia and leatherette with Carbon dashboard and black leatherette dashboard with red stitching along with Piano Black door décor and black headliner ensure the sporty meets the elegant.



Colours



Mamba Green uni\*



Graphite grey metallic



Candy white uni



Moon white metallic



Steel grey uni



Velvet red metallic



Race blue metallic



Energy blue uni



Smokey Diamond Silver metallic



Magic black metallic

\* Available only for RS.



Wheels



19" Becrux black metallic alloy wheels



19" Becrux silver metallic alloy wheels



19" Elias anthracite metallic alloy wheels, brushed\*



19" Elias silver metallic alloy wheels, brushed\*



18" Comet black metallic alloy wheels\*



18" Vega Aero black metallic alloy wheels



17" Slagard Aero black metallic alloy wheels



17" Mensa Aero silver alloy wheels



19" Draconis black metallic alloy wheels, brushed\*\*



18" Lerna anthracite metallic alloy wheels, brushed



18" Lerna silver metallic alloy wheels



18" Comet black metallic alloy wheels, brushed\*



17" Rotare Aero silver alloy wheels



16" Matar Aero silver alloy wheels



16" Alasia Aero silver alloy wheels



16" steel wheels with Tekton covers

\* Only available for RS.  
\*\* Only available for Sportline.





# Accessories



## Make your car truly yours with Genuine Accessories

The Octavia is engineered to meet everyone's needs, whether for everyday driving or holiday adventures. Customise it to reflect your personal style with Škoda Genuine Accessories. Enhance its look with a wide array of sporty alloy wheels and design features such as front and rear spoilers, mirror caps, and more. Add a touch of elegance and comfort to the interior with premium foot mats, pedal covers, and unique LED logo projectors for the doors.

But it's not just about looks. You can simplify your daily routine in many ways. A variety of practical accessories like hooks, media holders, and cooling boxes will make your journey and commute more enjoyable than ever. Of course, safety is paramount. That's why we offer a full range of child safety seats for your little ones, along with safety solutions for your pets.

Moreover, you can transform the boot of your Octavia into an even more functional space. Choose from our selection of mats, trays, and net programmes to keep everything tidy and organised.

Make your Octavia simply yours.







#### Towbar rack

000 071 105P | LHD, for 3 bicycles  
5E3 071 105 | LHD, for 2 bicycles

#### Adapter for 4<sup>th</sup> bicycle\*

5E3 071 109 | LHD

\* This adapter is only compatible with the towbar rack for 3 bicycles.

## More space for life

For those with an active lifestyle, even the largest boot might not be enough. Whether you're packing bicycles, skis, or snowboards, you need plenty of space. Škoda Genuine Accessories offer the perfect solution with roof boxes and racks, giving you extra room to carry everything you need.



#### Roof box\*\*

57H 071 200 | 512 l\*  
3P0 071 200B | 400 l\*  
5L6 071 175 | 380 l

#### Roof rack

5E7 071 151A | Combi  
5E6 071 126 | Limo

\* The roof box is accessible from both sides for comfortable loading and unloading of gear.  
\*\* Ask your dealer about the colour options.





**Ski and snowboard rack - slide-out**

000 071 129AC



**Ski and snowboard rack**

000 071 129AA





**Front bumper spoiler**

5E3 071 606B F9R | black  
5E3 071 606B GRU | primed

**Tailgate spoiler**

5E6 071 641 F9R | Limo,  
black metallic



**Rear bumper spoiler**

5E3 071 610A F9R | black







**Exterior mirror caps**

5E3 072 530B F9R | black, without Side View Assist  
5E3 072 530C F9R | black, with Side View Assist

**Outstanding style**

Let your car reflect your individuality and perfectly fit your life. Give it a special look with exterior mirror caps or LED logo projectors. Combine style and practicality with the door umbrella or enhance both driving enjoyment and looks with stainless steel pedal covers.



**Mud flaps**

5E3 075 111A | front  
5E3 075 101 | rear





#### Door equipment

3P0 087 600 | umbrella  
5E3 096 011 | brush



#### Footrest

5E1 064 209

#### Pedal covers

5E1 064 200 | manual transmission  
5E1 064 205 | automatic transmission





**Decorative door sill strips**

- 5E3 071 303A | stainless steel insert
- 5E3 071 303 | stainless steel

**Textile foot mats Prestige – grey lava**

- 5E4 061 270A | LHD
- 5E4 061 270C | LHD, hybrid
- 5E8 061 270A | RHD
- 5E8 061 270C | RHD, hybrid

**Qualified for every weather**

Live your best life on the road. Make those long hours in your car more enjoyable with our wide range of accessories. Customise your car’s interior to suit your style with premium textile foot mats and decorative strips, or opt for practicality and protection with rubber all-weather mats. The choice is yours, any time, any season.



**Textile foot mats Prestige**

- 5E4 061 270 | LHD
- 5E4 061 270B | LHD, hybrid
- 5E8 061 270 | RHD
- 5E8 061 270B | RHD, hybrid

**Textile foot mats Standard**

- 5E4 061 404 | LHD
- 5E4 061 404A | LHD, hybrid
- 5E8 061 404 | RHD
- 5E8 061 404A | RHD, hybrid





All-weather mat over tunnel

5E3 061 580



All-weather foot mats – grey

5E4 061 500 | LHD  
5E4 061 500A | LHD, hybrid  
5E8 061 500 | RHD  
5E8 061 500A | RHD, hybrid



All-weather foot mats – red

5E4 061 500B | LHD  
5E8 061 500B | RHD





**Never get bored**

Enjoy even the longest trips. With the Entertainment pack, you'll have your entertainment right in front of you with two multimedia holders. The Comfort pack adds Smart Holders, hangers, adapters, and even a door panel bin, so you can turn the backseat into your living room sofa.

**Comfort pack**

000 061 122D

- Smart Holder – multimedia holder
- Smart Holder – hook
- Smart Holder – hanger
- Smart Holder – adapter
- Door panel bin (black)

**Entertainment pack**

000 061 122K

- Smart Holder – adapter (2 pcs)
- Smart Holder – multimedia holder (2 pcs)





**Connecting cable**

6VA 051 445A | USB-C  
6VA 051 445B | lightning



**Multimedia holder**

000 051 435AK



**Smart Holders**

3V0 061 128 | adapter  
5E3 061 128 | adapter for sports seats  
3V0 061 129 | multimedia holder  
3V0 061 127 | hanger  
3V0 061 126 | hook





**KIDFIX i-SIZE child seat\***

(5–12 years, 100–150 cm, 15–36 kg, 4-point seat belt)

000 019 906AG

\* XP PAD is not included in the product package.

**A cosy ride for everyone**

Our top priority is the safety and comfort of your passengers. Our range of seats covers all sizes, from newborns to children up to 36 kilograms, ensuring they travel just as comfortably as you do.



**TRIFIX2 i-SIZE child seat**

(15 months–4 years, 76–105 cm, 9–22 kg, 4-point seat belt)

000 019 906AH

**Protective pad under child seat**

000 019 819A





#### Dog safety belt

000 019 409A | size S  
000 019 409B | size M  
000 019 409C | size L  
000 019 409D | size XL

#### Rear seat protection\*

3V0 061 680

\* The size of the rear seat protection can be adapted to cover just one half of the rear seats.

## Perfectly packed

Maximise your car's space by keeping everything neatly organised. Secure your luggage and sports gear, protect your car from dirt, and provide a safe spot for your pets. With a designated area for your pets, they can travel securely and comfortably. It's not just convenient, it's safer for everyone!



#### Ski sack

3P0 050 515





**Fixing boot strap**

3P0 071 790

**Boot grille**

5E7 017 221 | transverse

5E7 017 222 | longitudinal



**Loading edge mat**

3P0 071 336







**Fold-out boot mat**

5E7 061 210A | Combi basic floor  
5E7 061 210 | Combi double floor, hybrid, G-TEC  
5E6 061 210 | Limo



**Boot dish**

5E7 061 162 | Combi basic floor  
5E7 061 162B | Combi double floor, hybrid, G-TEC  
5E6 061 162 | Limo

**Sliding dividing element**

000 017 254A

**Aluminium partition for boot dish**

565 017 254





**Double-sided boot mat**

5E7 061 163 | Combi basic floor  
5E7 061 163A | Combi double floor, hybrid, G-TEC  
5E6 061 163 | Limo



**All-weather boot mat**

5E7 061 162A | Combi  
5E6 061 162A | Limo





**Boot dish double floor with slide-out tub and partition**

5E7 061 162C | Combi  
5E6 061 162C | Limo



**Net programme for Combi**

5E7 065 110 | black, basic floor  
5E7 065 110B | black, double floor, hybrid, G-TEC  
5E7 065 110A | grey, basic floor  
5E7 065 110C | red, basic floor  
5E7 065 110D | red, double floor, hybrid, G-TEC

**Net programme for Limo**

5E7 065 110 | black, basic floor  
5E7 065 110B | black, double floor, hybrid, G-TEC  
5E7 065 110A | grey, basic floor  
5E7 065 110C | red, basic floor  
5E7 065 110D | red, double floor, hybrid, G-TEC



Accessories Wheels

19"



**Elias**  
black metallic, brushed  
7.5J × 19" ET48 for 225/40 R19  
5E3 071 499AF FL8



**Becrux**  
anthracite metallic, brushed  
7.5J × 19" ET48 for 225/40 R19  
5E3 071 499AE HA7



**Becrux**  
silver metallic, brushed  
7.5J × 19" ET48 for 225/40 R19  
5E3 071 499AD 8Z8

19"



**Draconis**  
black metallic, brushed  
7.5J × 19" ET48 for 225/40 R19  
5E3 071 499AJ FL8



**Draconis**  
anthracite metallic, brushed  
7.5J × 19" ET48 for 225/40 R19  
5E3 071 499AK HA7



**Draconis**  
silver metallic, brushed  
7.5J × 19" ET48 for 225/40 R19  
5E3 071 499AH 8Z8

19"



**Altair**  
black metallic, brushed  
7.5J × 19" ET48 for 225/40 R19  
5E3 071 499AA FL8



**Altair**  
anthracite metallic, brushed  
7.5J × 19" ET48 for 225/40 R19  
5E3 071 499AB HA7



**Altair**  
silver metallic, brushed  
7.5J × 19" ET48 for 225/40 R19  
5E3 071 499AC 8Z8

19"



**Manaslu**  
anthracite metallic, brushed  
7.5J × 19" ET48 for 225/40 R19  
5E3 071 499AG HA7

18"



**Avior**  
black metallic, brushed  
7.5J × 18" ET48 for 225/45 R18  
5E3 071 498AP FL8



**Avior**  
silver metallic, brushed  
7.5J × 18" ET48 for 225/45 R18  
5E3 071 498AN 8Z8

All listed wheels are sold without center caps; the caps can be purchased separately.



18"



**Comet**  
black metallic, brushed  
7.5J × 18" ET48 for 225/45 R18  
5E3 071 498AE FL8



**Comet**  
black metallic  
7.5J × 18" ET48 for 225/45 R18  
5E3 071 498AF FL8



**Comet**  
anthracite metallic, brushed  
7.5J × 18" ET48 for 225/45 R18  
5E3 071 498AL HA7

18"



**Comet**  
silver metallic, brushed  
7.5J × 18" ET48 for 225/45 R18  
5E3 071 498AJ 8Z8



**Braga**  
anthracite, brushed  
7.5J × 18" ET48 for 225/45 R18  
5E3 071 498AB HA7



**Braga**  
silver metallic  
7.5J × 18" ET48 for 225/45 R18  
5E3 071 498AA 8Z8

18"



**Luxon**  
black metallic, brushed  
7.5J × 18" ET48 for 225/45 R18  
5E3 071 498AG FL8



**Luxon**  
anthracite metallic, brushed  
7.5J × 18" ET48 for 225/45 R18  
5E3 071 498AH HA7



**Luxon**  
silver metallic, brushed  
7.5J × 18" ET48 for 225/45 R18  
5E3 071 498AF 8Z8

18"



**Perseus**  
anthracite metallic, brushed  
7.5J × 18" ET48 for 225/45 R18  
5E3 071 498AL HA7



**Perseus**  
anthracite metallic  
7.5J × 18" ET48 for 225/45 R18  
5E3 071 498AM HA7



**Perseus**  
silver metallic, brushed  
7.5J × 18" ET48 for 225/45 R18  
5E3 071 498AJ 8Z8

All listed wheels are sold without center caps; the caps can be purchased separately.



18"



**Perseus**  
silver metallic  
7.5J × 18" ET48 for 225/45 R18  
5E3 071 498AK 8Z8

17"



**Nevis**  
black metallic  
6.5J × 17" ET46 for 205/55 R17  
5E3 071 497AB FL8



**Nevis**  
silver metallic  
6.5J × 17" ET46 for 205/55 R17  
5E3 071 497AA 8Z8

17"



**Aries**  
anthracite metallic, brushed  
7J × 17" ET46 for 205/55 R17  
5E3 071 497AF HA7



**Aries**  
silver metallic, brushed  
7J × 17" ET46 for 205/55 R17  
5E3 071 497AE 8Z8



**Lyra**  
black metallic  
6.5J × 17" ET46 for 205/55 R17  
5E3 071 497AD FL8



**Lyra**  
silver metallic  
6.5J × 17" ET46 for 205/55 R17  
5E3 071 497AC 8Z8

17"



**Slagard**  
black metallic, brushed  
7.0J × 17" ET46 for 205/55 R17  
5E3 071 497AG FL8



**Rotare**  
silver metallic  
7.0J × 17" ET46 for 205/55 R17  
5E3 071 497AH 8Z8

16"



**Alasia**  
silver metallic  
7.0J × 16" ET46 for 205/60 R16  
5E3 071 496AC 8Z8

16"



**Velorum**  
black metallic  
6.5J × 16" ET46 for 205/60 R16  
5E3 071 496AB FL8




**Velorum**  
silver metallic  
6.5J × 16" ET46 for 205/60 R16  
5E3 071 496AA 8Z8

Hub covers 16"



**Tekton**  
hub covers  
for 16" steel wheels  
5E0 071 456C | 4-piece set

 May be used with snow chains.

All listed wheels are sold without center caps; the caps can be purchased separately.



Technical Data

Technical specifications Octavia	1.5 TSI/85 kW	1.5 TSI/110 kW	2.0 TSI/150 kW 4x4	2.0 TDI/85 kW	2.0 TDI/110 kW	RS
	Turbocharged petrol engine	Turbocharged petrol engine	Turbocharged petrol engine	Turbocharged diesel engine	Turbocharged diesel engine	Turbocharged petrol engine
Engine						
Cylinders/Cubic capacity (cc)	4/1,498	4/1,498	4/1,984	4/1,968	4/1,968	4/1,984
Max. performance/Revs (kW/rpm)	85/5,000–6,000	110/5,000–6,000	150/4,500–6,000	85/2,750–4,250	110/3,000–4,200	195/5,250–6,500
Max. torque/Revs (Nm/rpm)	220/ 1,500–3,000	250/1,500–3,500	320/1,500–4,400	300/1,600–2,500	360/1,600–2,750	370/1,600–4,500
Air pollution regulation	EU6EB	EU6EB	EU6EB	EU6EB	EU6EB	EU6EB
Fuel	Petrol, RON min. 95	Petrol, RON min. 95	Petrol, RON min. 95	Diesel	Diesel	Petrol
Performance						
Maximum speed (km/h)	203	229	228	212	228	250
Acceleration 0–100 km/h (s)	10.4 (10.6)	8.5	6.6	10.4	8.5	6.4
Fuel consumption WLTP (l/100 km) – combined	5.2–5.7 (4.9–5.4)	5.3–5.8 (4.9–5.4)	6.7–7.2	4.3–4.7	4.5–4.9	6.7–7.1
CO <sub>2</sub> emissions WLTP (g/km) – combined	119–129 (111–123)	120–131 (112–122)	151–163	112–122	117–127	153–161
Power transmission						
Type	Front-wheel drive	Front-wheel drive	4x4	Front-wheel drive	Front-wheel drive	Front-wheel drive
Transmission	Manual 6-speed (Automatic 7-speed DSG)	Manual 6-speed (Automatic 7-speed DSG)	Automatic 7-speed DSG	Manual 6-speed	Automatic 7-speed DSG	Automatic 7-speed DSG
Weight						
Kerb weight – with 75 kg driver (kg)	1,361–1,514 (1,390–1,538)	1,361–1,519 (1,390–1,543)	1,539–1,683	1,436–1,587	1,464–1,622	1,531–1,635
Payload – incl. driver and extra equipment (kg)	471–608 (457–598)	466–608 (452–598)	500–662	448–593	453–604	510–578
Total weight (kg)	1,870–1,910 (1,880–1,920)	1870	2,030–2,200	1,920–1,960	1,960–2,000	2,015–2,070
Trailer load without brakes (max. kg)	680 (690)	680 (690)	750	710	730	750
Trailer load with brakes – 12% (max. kg)	1,300	1,500	1,700	1,500	1,600	1,600

Further specifications

Body		Front brakes	Disc brakes with inner cooling and with single-piston floating calliper
Type	5-seater, 5-door, 2-compartment	Rear brakes	Drum brakes; alternatively disc brakes depending on engine version
Turning circle diameter (m)	11,1	Clearance (mm)	143 (129 for RS)
Chassis		Luggage storage space (max. l)	
Front axle	McPherson suspension with lower triangular links and torsion stabiliser	Without spare tyre, with rear seat backrests – upright/down	600/1,550
Rear axle	Compound link crank-axle	Tank capacity (l)	45 (50 for RS)

WLTP – World harmonized light-duty vehicles test procedure.  
The weights depend on the equipment version of the car.  
( ) Applies to the version with automatic transmission.

Technical specifications and drawings apply to the Selection version.  
The parameters for Sportline cars may differ. For more information,  
contact your Škoda partner.





Technical Data

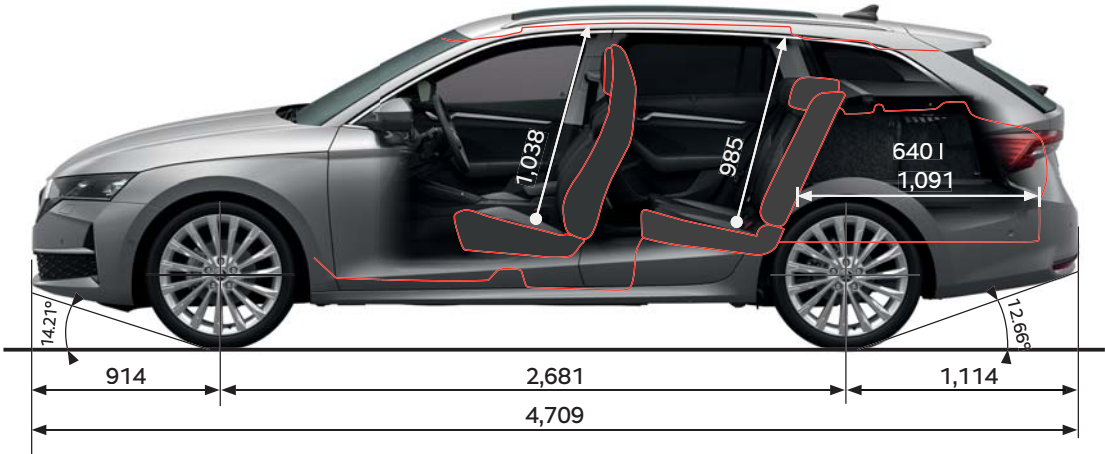
Technical specifications Octavia Combi	1.5 TSI/85kW	1.5 TSI/110 kW	2.0 TSI/150 kW	2.0 TDI/85kW	2.0 TDI/110 kW	RS
	Turbocharged petrol engine	Turbocharged petrol engine	Turbocharged petrol engine	Turbocharged diesel engine	Turbocharged diesel engine	Turbocharged petrol engine
Engine						
Cylinders/Cubic capacity (cc)	4/1,498	4/1,498	4/1,984	4/1,968	4/1,968	4/1,984
Max. performance/Revs (kW/rpm)	85/5,000–6,000	110/5,000–6,000	150/4,500–6,000	85/2,750–4,250	110/3,000–4,200	195/5,250–6,500
Max. torque/Revs (Nm/rpm)	220/1,500–3,000	250/1,500–3,500	320/1,500–4,400	300/1,600–2,500	360/1,600–2,750	370/1,600–4,500
Air pollution regulation	EU6EB	EU6EB	EU6EB	EU6EB	EU6EB	EU6EB
Fuel	Petrol, RON min. 95	Petrol, RON min. 95	Petrol, RON min. 95	Diesel	Diesel	Petrol
Performance						
Maximum speed (km/h)	203	226 (225)	228	206	225	250
Acceleration 0–100 km/h (s)	10.5 (10.7)	8.6	6.7	10.5	8.6	6.5
Fuel consumption WLTP (l/100 km) – combined	5.4–5.8 (5.0–5.4)	5.4–5.9 (5.0–5.5)	6.8–7.3	4.4–4.7	4.6–4.9	6.8–7.2
CO <sub>2</sub> emissions WLTP (g/km) – combined	122–132 (113–132)	124–134 (114–124)	155–165	115–124	120–130	154–163
Power transmission						
Type	Front-wheel drive	Front-wheel drive	4x4	Front-wheel drive	Front-wheel drive	Front-wheel drive
Transmission	Manual 6-speed (Automatic 7-speed DSG)	Manual 6-speed (Automatic 7-speed DSG)	Automatic 7-speed DSG	Manual 6-speed	Automatic 7-speed DSG	Automatic 7-speed DSG
Weight						
Kerb weight – with 75 kg driver (kg)	1,377–1,565 (1,405–1,589)	1,377–1,568 (1,405–1,592)	1,556–1,735	1,452–1,638	1,479–1,670	1,546–1,687
Payload – incl. driver and extra equipment (kg)	410–598 (396–580)	407–598 (393–580)	490–655	375–561	375–566	448–572
Total weight (kg)	1,900–1,910	1,900–1,910	2,075–2,190	1,938	1,970	2,005–2,060
Trailer load without brakes (max. kg)	680 (700)	680 (700)	750	720	730	750
Trailer load with brakes – 12% (max. kg)	1,300	1,500	1,700	1,500	1,600	1,600

Further specifications

Body		Front brakes	Disc brakes with inner cooling and with single-piston floating calliper
Type	5-seater, 5-door, 2-compartment	Rear brakes	Drum brakes; alternatively disc brakes depending on engine version
Turning circle diameter (m)	11.1	Clearance (mm)	142 (129 for RS)
Chassis		Luggage storage space (max. l)	
Front axle	McPherson suspension with lower triangular links and torsion stabiliser	Without spare tyre, with rear seat backrests – upright/down	640/1,700
Rear axle	Compound link crank-axle	Tank capacity (l)	45 (50 for RS)

WLTP – World harmonized light-duty vehicles test procedure.  
The weights depend on the equipment version of the car.  
( ) Applies to the version with automatic transmission.

Technical specifications and drawings apply to the Selection version.  
The parameters for Sportline cars may differ. For more information,  
contact your Škoda partner.





#### Image disclaimer

The images presented in this catalogue (brochure) are used for illustrative purposes only and are not intended to form part of any contract or warranty. They display pre-series cars and certain illustrations, features, parts and equipment may differ from the actual production cars and from country to country. To get the exact specification of features, parts and equipment, please get in touch with your nearest local Škoda dealer.

If you've enjoyed reading  
about it – imagine driving it.  
**Call us to arrange  
a test drive!**



#### MyŠkoda

Enjoy full control of your car. Download MyŠkoda and access all necessary services anytime, whether it's driving data, fuel range, lock and unlock, or even where you last parked.



#### Assembly manuals

Follow the user manuals to install Škoda Genuine Accessories on your car correctly. You can also visit your authorised Škoda Service partner.

Your Škoda partner:

10/2025