

SKODA



The new
Scala



[contents](#)

Scala
Monte Carlo

Accessories
Accessories Wheels

Technical Data

For all that you are

You are what you do. And if you play a lot of roles in life, then you need a playmate who can keep up with your pace. Someone like the new Škoda Scala.

The Scala's do-it-all attitude is dressed in a strikingly unique design. Inside, the Škoda Scala continues to tick all possible boxes with its host of comfort, connectivity and safety features. The modern driver will certainly feel empowered by must-haves like the LED headlights, Climatronic panel, Virtual Pedal and immersive infotainment display.

That's what we call versatile. That's what we call Škoda.





Active meets attractive

At the first glance, you'll notice the sleeker headlights. The wider front grille and distinctively sporty-shaped bumper complete the new, more dynamic look of the Scala. The sportier rear bumper sets off the whole style. Still as practical as ever, but now even more attractive.



Panoramic roof

On the outside, the panoramic roof underscores the sleek, stylish look. On the inside, it brightens the interior and opens the view of the sky above.

The sleeker, sharper taillights are the prominent feature of the new Scala's rear. The rear bumper with integrated diffuser and eye-catching reflectors adds a sporty touch. The elongated rear window with spoiler and Škoda lettering remains as classy as ever.



Virtual Pedal

Full hands are not a problem any more. With Virtual Pedal, just a swing of the foot under the bumper is enough to open the door. Available in combination with KESSY and electric 5th door.

KESSY

No more hassle looking for your keys. With the Keyless Entry, Start, and Exit System, the doors unlock or lock again with just a touch of the door handle. You just need to have the key in your pocket.



Living room. Lounge. Office

Driver focused and sharp, yet functional and roomy for all passengers. The focal point of the new interior is the 10" Virtual Cockpit, accompanied by 9" Škoda Navigation in the middle of the dashboard. The dashboard itself draws attention with a choice of new upholstered décors made of fabric, Suedia or Carbon look. These are matched by the redesigned seat upholstery for all trim levels. The new ambient lighting with two switchable colours underscores the stylish look.



Climatronic

Maintaining a pleasant climate on board is now easier than ever. The Climatronic air conditioning system is fitted with a pair of buttons that allow you to adjust the air flow without taking your eyes off the road.

Home to all your digital avatars

Today's world is digital. The Scala is the perfect everyday companion to take care of your digital needs as well. Whether charging your devices or providing you with the latest information on a big screen, it always has a solution.



Always charged

With a pair of USB-C ports as standard and optionally available wireless charging, you can keep your devices charged at all times with ease.

Connectivity

You can display your apps on the Infotainment display using Apple CarPlay and Android Auto either wirelessly or via the USB-C ports, which also offer fast 45 W charging for your devices.



Škoda Connect: Take the online world with you

Stay connected wherever you are. Being fully and permanently online means always having access to entertainment, information, and possible assistance while on the move. Škoda Connect is your gateway to a world of unlimited communication options.



MyŠkoda

Enjoy full control of your car. Download MyŠkoda application Essentials and access all necessary services anytime, whether it's driving data, fuel range, lock and unlock or even where you last parked

Online Traffic Information

With Online Traffic Information, you always get up-to-date information, saving you time and the stress of sitting in traffic jams. If enabled, the navigation system will automatically recalculate the route to arrive at the destination just in time.

Always more than meets the eye

When exploring the world, it's good to have a partner who takes care of all the small things. With its many smart solutions, the Škoda Scala does just that. Everything you might need is easily on hand in the spacious cabin full of storage options.



Double pocket

Keep your things organised with the double pockets on the rear sides of the front seats. The larger one is perfect for a notebook or laptop computer, while the smaller one nicely fits a smartphone.

Box for rear passengers

Rear passengers will enjoy the smart storage box on the centre tunnel. It includes a flexible cupholder, which can be folded away when not used to make more room for anything they might want on hand.



Net programme

Everything in its place and easy to see. This set of three nets keeps your items from moving around while keeping them in good view.

If it matters, it fits

Wherever you're going, it's great to have space for everything you might need. It's even better to have everything well-organised and secured safely. With 467 litres of luggage space and a plethora of smart details, everything will find its place and stay exactly where you want it to be.



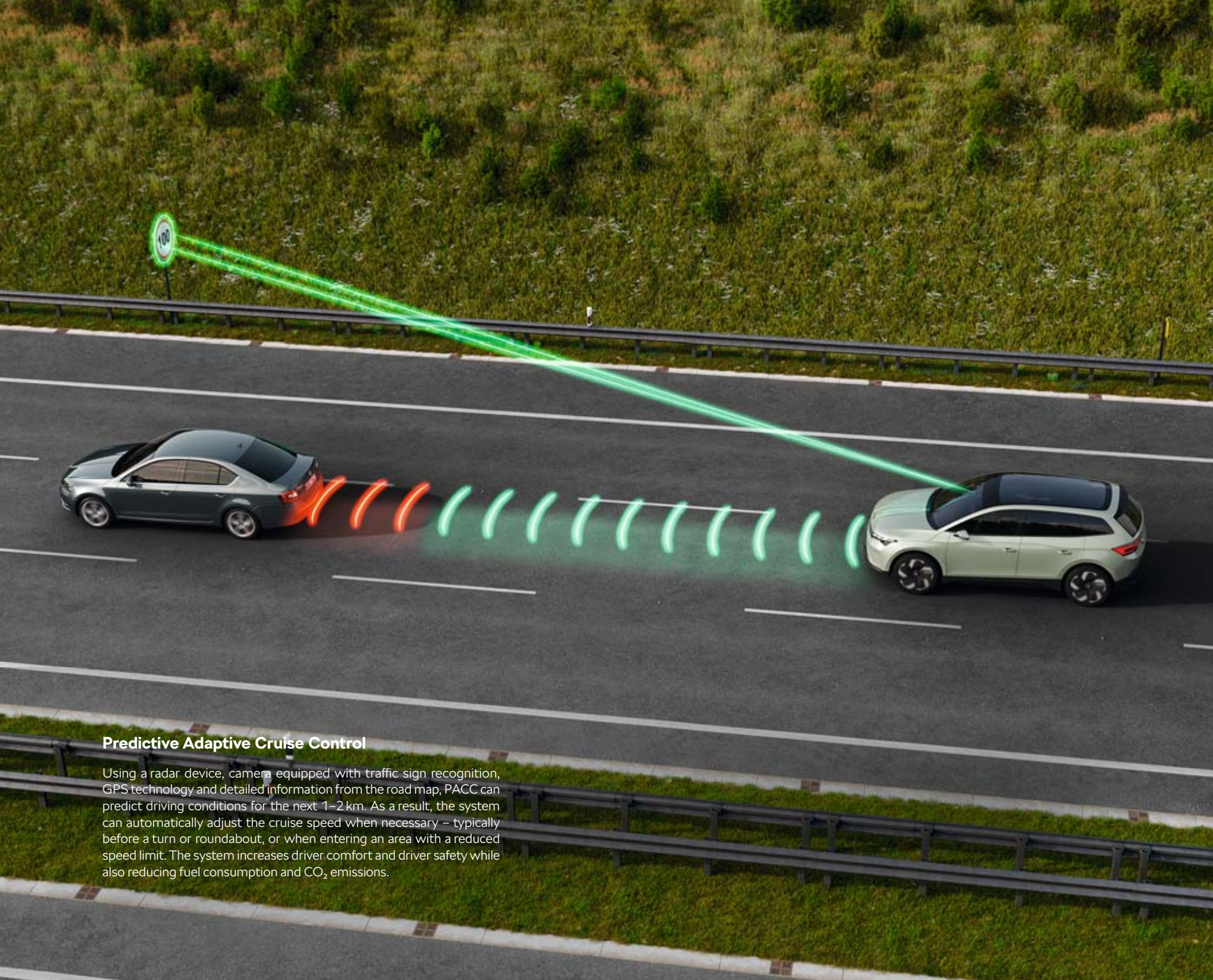
Net pocket

Lighter items that need to be on hand even when the boot is full can be stored in the practical net, out of sight under the luggage room cover.



Cargo elements

The easy way to secure larger items. Cargo elements are fixed to the floor using Velcro and can be folded into any angle.

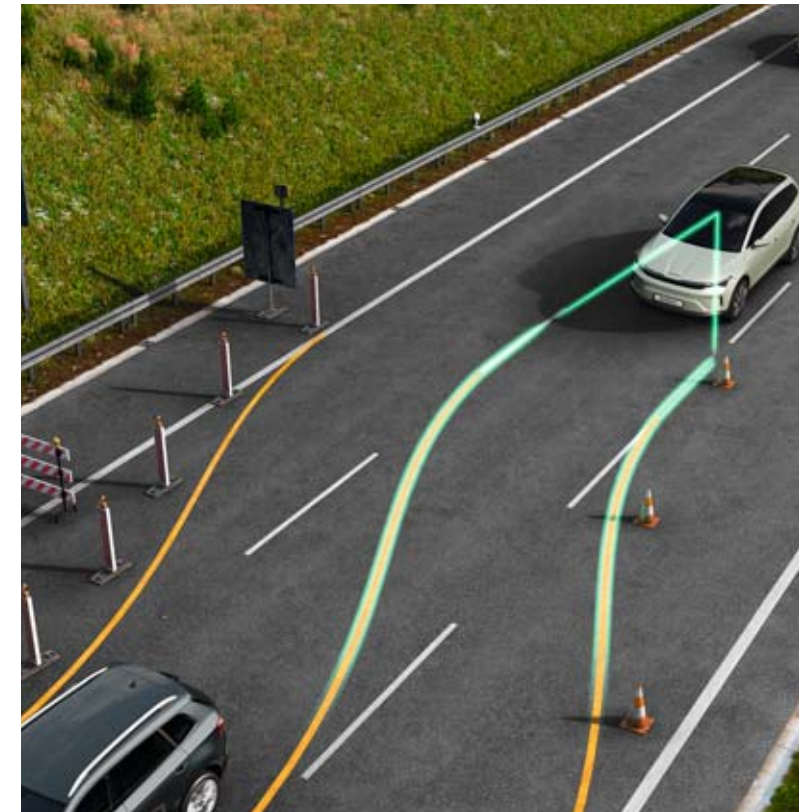


Predictive Adaptive Cruise Control

Using a radar device, camera equipped with traffic sign recognition, GPS technology and detailed information from the road map, PACC can predict driving conditions for the next 1–2 km. As a result, the system can automatically adjust the cruise speed when necessary – typically before a turn or roundabout, or when entering an area with a reduced speed limit. The system increases driver comfort and driver safety while also reducing fuel consumption and CO₂ emissions.

Even safety can multitask

The Travel Assist system combines Adaptive Cruise Control (including Front Assist) and Adaptive Lane Assist functions. For maximum safety, the system must be constantly monitored by the driver. That's why a capacitive steering wheel detects the driver's tactility, providing an interactive interface to the system. If the driver is not engaged in driving, the system issues a visual and audible warning and eventually disengages.



Adaptive Lane Assist

The system is capable of keeping the car in the middle of the correct lane and of alerting the driver in case of deviation. It can also take control of the car in the event of lane changes during roadworks.



Side Assist

Using radar sensors in the rear bumper, Side Assist (which can detect other vehicles and harder to see objects like cyclists up to 70 m away) monitors the areas behind and beside your car. Based on the distance and speed of the surrounding vehicles, it decides whether or not it should warn the driver.

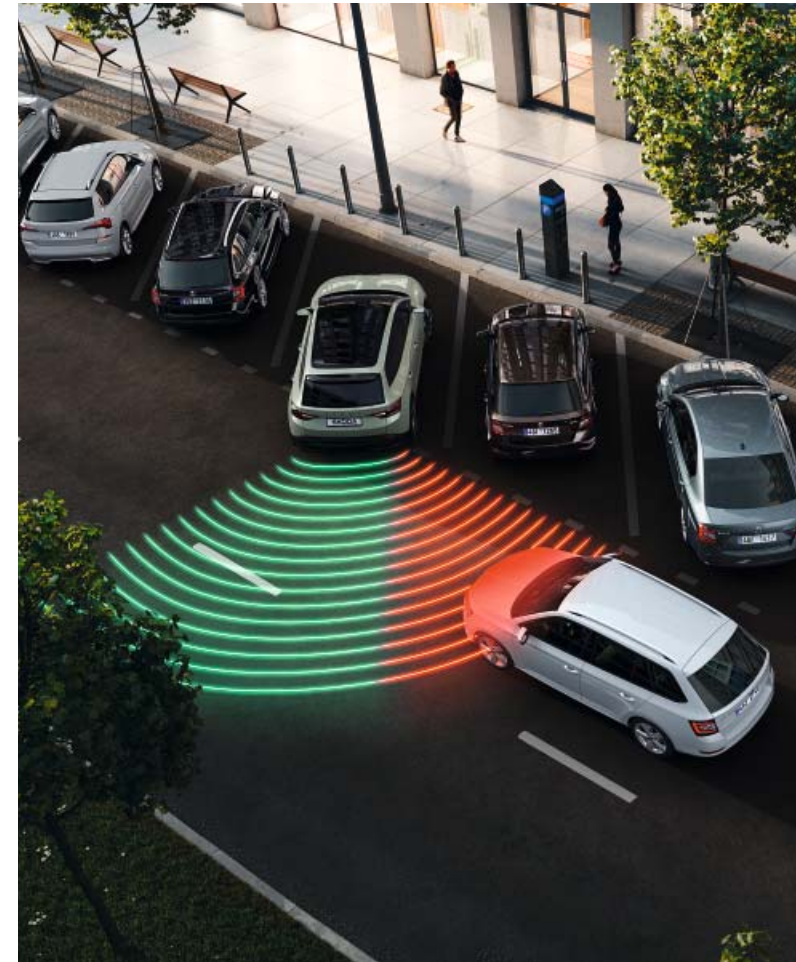
This is an illustrative image depicting an assistance system feature and does not represent any specific Škoda model.



Matrix LED headlights

The TOP LED Matrix headlights feature Matrix Beam Function. This allows you to use the high beams continuously, without blinding other drivers. Using a windscreen camera, the Matrix Beam Function responds to the traffic situation and turns off only some segments of the light. Other segments are turned on and illuminate the road. The Matrix Beam Function also uses information from the navigation system. Thanks to it, the high beams will only turn on when you are out of a built-up area.

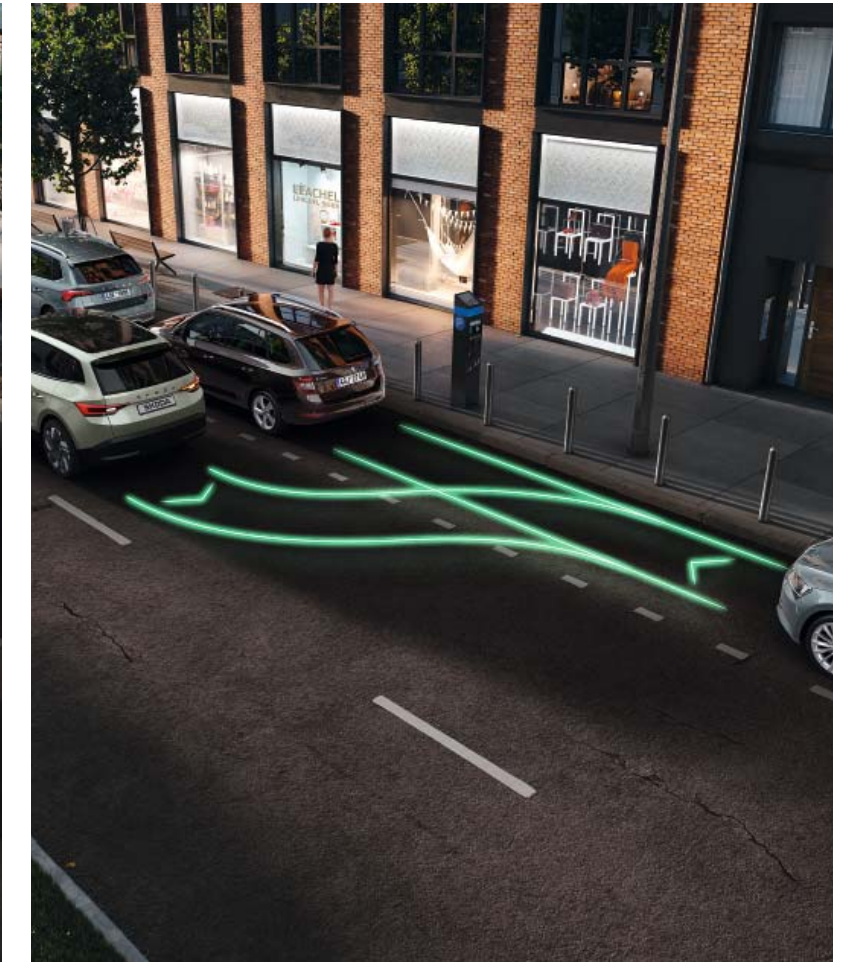
Eyes up front. And behind



Rear Traffic Alert

Using the Side Assist sensors in the rear bumper, Rear Traffic Alert helps you reverse safely from a parking space during poor visibility. It can even engage the brakes automatically if it detects imminent danger.

You can encounter various things on the road. To ensure that the car is ready to handle all situations that may occur en route, additional assistants with multiple functions are on hand to help or fill in for the driver.



Park Assist

Minimise the hassle of parking in tight spots with Park Assist. It automatically selects an appropriate parking place and safely parks in a row of parallel or perpendicularly parked vehicles.

This is an illustrative image depicting an assistance system feature and does not represent any specific Škoda model.



Studio interior

Grey metallic pad with glossy black décor
Black/grey fabric upholstery

Essence

The standard equipment of the Essence version includes 8" Škoda Infotainment, 8" Digital Display, manual air conditioning, Bluetooth, rear sensors, LED headlights, and more.



Studio

The Studio interior boasts a modern, practical design in a combination of black/grey upholstery with grey metallic pad, glossy black décor and satin black door inserts.



Loft interior

Krepp recycled pad with glossy black décor
Krepp recycled / black fabric upholstery

Selection

The standard equipment of the Selection version includes electric windows front and rear, multifunction steering wheel, fabric dashboard pad, height-adjustable front seats, Hill-Hold Control, Easy Start, LED fog lights, mobile phone pockets and more. The Selection trim is available with a choice of four interior design selections.



Loft

The Krepp recycled pad, contrasting with The Krepp recycled seats and glossy black décor, gives the Loft interior a stylish contemporary feel.



Lodge interior

Grey Suedia pad with copper décor
Grey Suedia / black fabric upholstery

Selection



Lodge

The combination of grey Suedia pad and upholstery with copper décor and two-colour ambient lighting give the Lodge interior a feeling of luxury, underscored by the leather multifunction steering wheel, floor mats, and rear armrest.



Dynamic interior

Black Suedia pad with red décor
Black Suedia / black fabric upholstery

Selection



Dynamic

The centrepiece of the Dynamic interior are the sports seats, complemented by the sports steering wheel, black Suedia pad, and red décor. The black roof liner, sports pedal covers and door sills with "Scala" lettering complete the sporty theme.



Suite interior

Black Suedia pad with chrome décor
Black Suedia / black leather upholstery

Selection



Suite

The elegant style of the Suite interior starts with the black leather/Suedia and is further emphasised by the chrome décor and black Suedia pad. The leather steering wheel, heated front seats, and electric driver's seat complete the image of luxury.



Monte Carlo



**Add character to all
your characters**

Inspired by the great racing heritage of Škoda. Designed to look great both on the roads above Monte Carlo and in the elegant city itself. The Scala Monte Carlo brings sporty style into everyday driving.



Winning looks

Unmistakably sporty, undeniably stylish. The aerodynamic front bumper with integrated spoiler adds dynamic flair, while the gloss black details perfectly suit whatever body colour you choose. The TOP LED Matrix headlights are part of the standard equipment.

The prominent rear bumper with gloss-black diffuser is no not only attractive to look at, but also aerodynamically efficient. Other highlights that are sure to be noticed by the drivers behind you are the elongated glazing and the gloss black lettering.



The trendiest address in any town

Monte Carlo is not only synonymous with the excitement of the famous rally, but also living in style and comfort. The Scala Monte Carlo embodies the same. Scala Monte Carlo is the same. The Carbon look dashboard pad and door inserts combine the elegance with the sporty, dynamic look, which is further enhanced by the characteristic red accents on the upholstery, multifunction sports steering wheel in perforated leather, sports pedal covers and black headliner. The comprehensive equipment, including the Climatronic climate control, 8-speaker stereo, and switchable ambient lighting is there for comfort. The Drive Mode Select allows the driver to choose between the dynamic or cossetting side of the Scala's character.



Monte Carlo

Carbon look pad with red décor
Carbon look / black fabric upholstery

Monte Carlo

The standard equipment of the Monte Carlo version includes Climatronic, auto dimming mirror, Drive Mode Select, Wireless SmartLink, 8-speaker stereo, Carbon look dashboard pad, ambient lightning, TOP LED Matrix headlights, LED fog lights with corner function and more.



Monte Carlo

The unique style of the Monte Carlo version continues with the interior, highlights of which include the Carbon look sports seats with red accents, Carbon look dash pad and door inserts, sports steering wheel and pedals and black roof liner.

Colours



Graphite Grey metallic



Candy White uni



Moon White metallic



Brilliant Silver metallic



Steel Grey uni



Velvet Red metallic



Energy Blue uni



Race Blue metallic



Magic Black metallic

Wheels



18" Fornax silver alloy wheels



18" Ursa black alloy wheels, polished*



18" Ursa silver alloy wheels with black Aero covers



17" Propus Aero black/silver alloy wheels, polished



17" Stratos silver alloy wheels



16" Cortadero Aero silver alloy wheel



18" Vega Aero black/silver alloy wheels, polished



17" Kajam black alloy wheels with black Aero covers*



17" Kajam silver alloy wheels with black Aero covers



16" Montado Aero black/silver alloy wheels, polished



16" Nyota silver alloy wheels



16" steel wheels with Tecton covers

* Available for Monte Carlo models



Accessories

Upgrade your ride with Genuine Accessories

The Scala offers the perfect blend of style and practicality. With Škoda Genuine Accessories, you can make your Scala even better.

Upgrade its look with stylish alloy wheels, mirror caps, or door sills. Inside, choose premium foot mats for comfort or all-weather mats for durability.

Enjoy smart features like door-mounted bins, entertainment packages for rear passengers, and cooling boxes for snacks. Organising your boot is easy with hooks, nets, and fixing elements, ensuring you have everything you need for any adventure.

Safety is crucial, which is why we provide a range of child seats and pet transport solutions. From travel harnesses for your furry friends to advanced child seat systems, your loved ones are always in good hands.

Additionally, you can enhance your driving experience with tech upgrades such as wireless charging pads and advanced navigation systems. These thoughtful additions ensure that every journey is as enjoyable and efficient as possible.

Customise your car to match your preferences and needs, making every drive a unique and satisfying experience. With Škoda Genuine Accessories, your Scala will be more than just a car – it will become an extension of your lifestyle.

Feel free to tweak your Scala to better suit your needs!



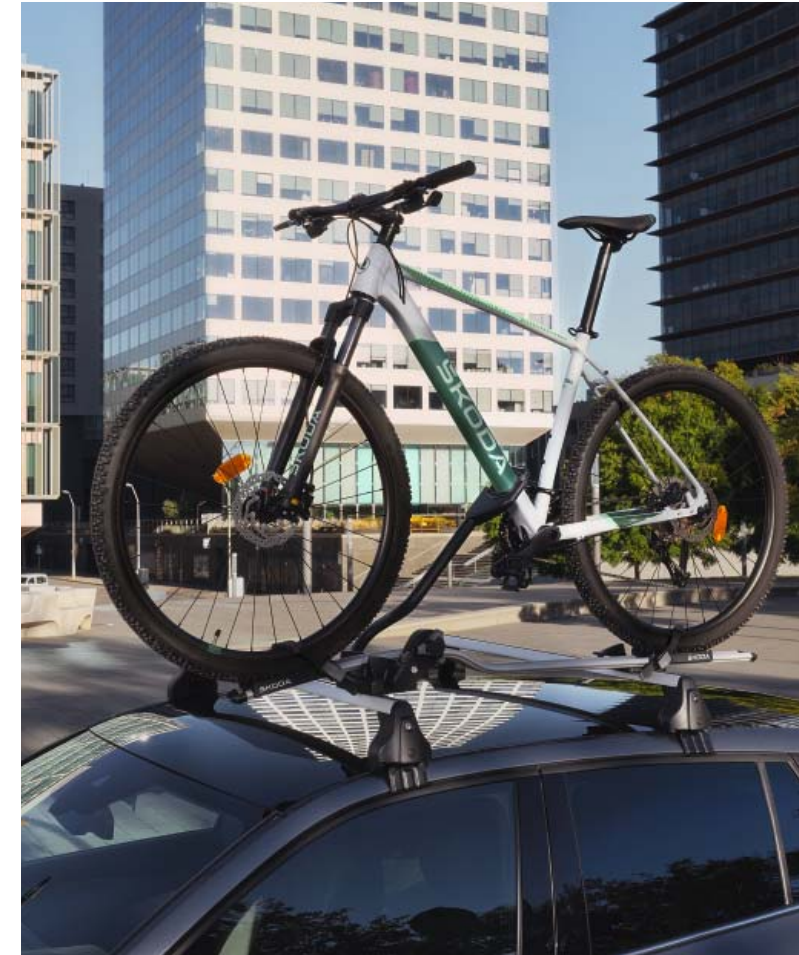


Towbar rack

000 071 105P | LHD, for 3 bicycles
5E3 071 105 | LHD, for 2 bicycles

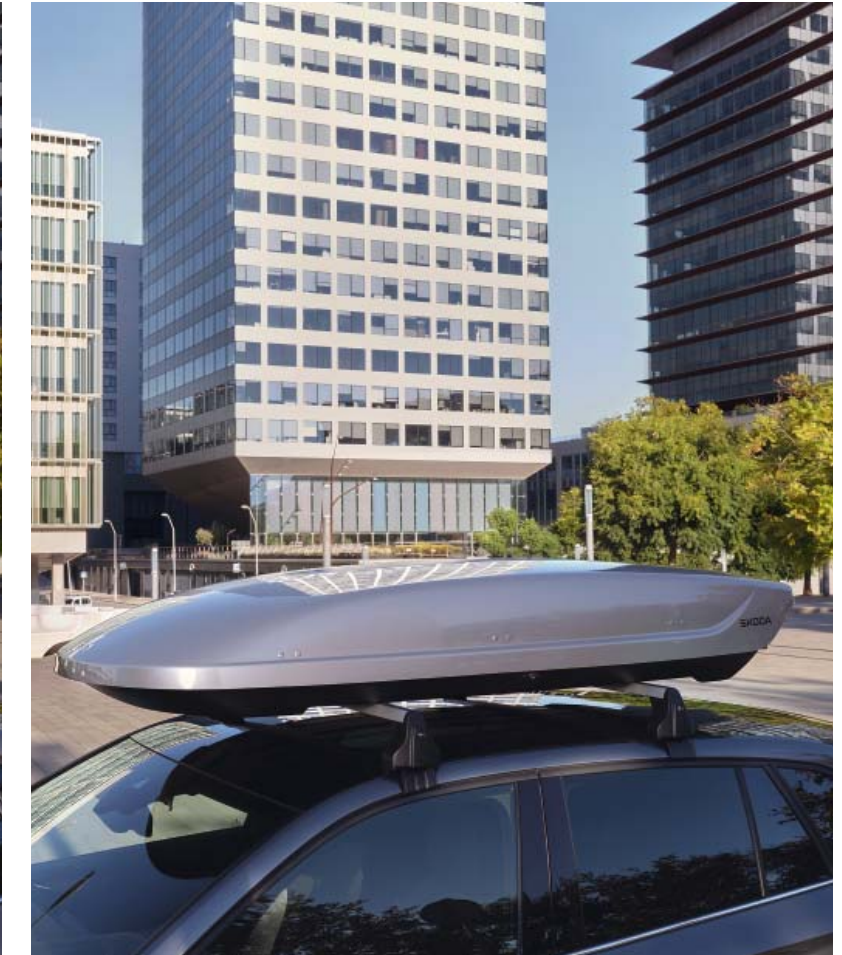
Never leave your gear behind

Sometimes, an active lifestyle requires more equipment than you can fit inside your vehicle. Bicycles, skis, or snowboards can be conveniently transported using roof racks, while roof boxes offer additional space for smaller gear or luggage. Packing has never been this easy.



Bicycle rack

000 071 128P | aluminium



Roof box**

57H 071 200 | 512 |*
3P0 071 200B | 400 |*
5L6 071 175 | 380 |

Basic roof rack

657 071 126

* The roof box is accessible from both sides for comfortable loading and unloading of gear.
** Ask your dealer about the colour options.



Ski and snowboard rack – slide-out

000 071 129AC



Ski and snowboard rack

000 071 129AA



Pack Red & Grey

657 064 317



Mud flaps

657 075 111A | front
657 075 101A | rear

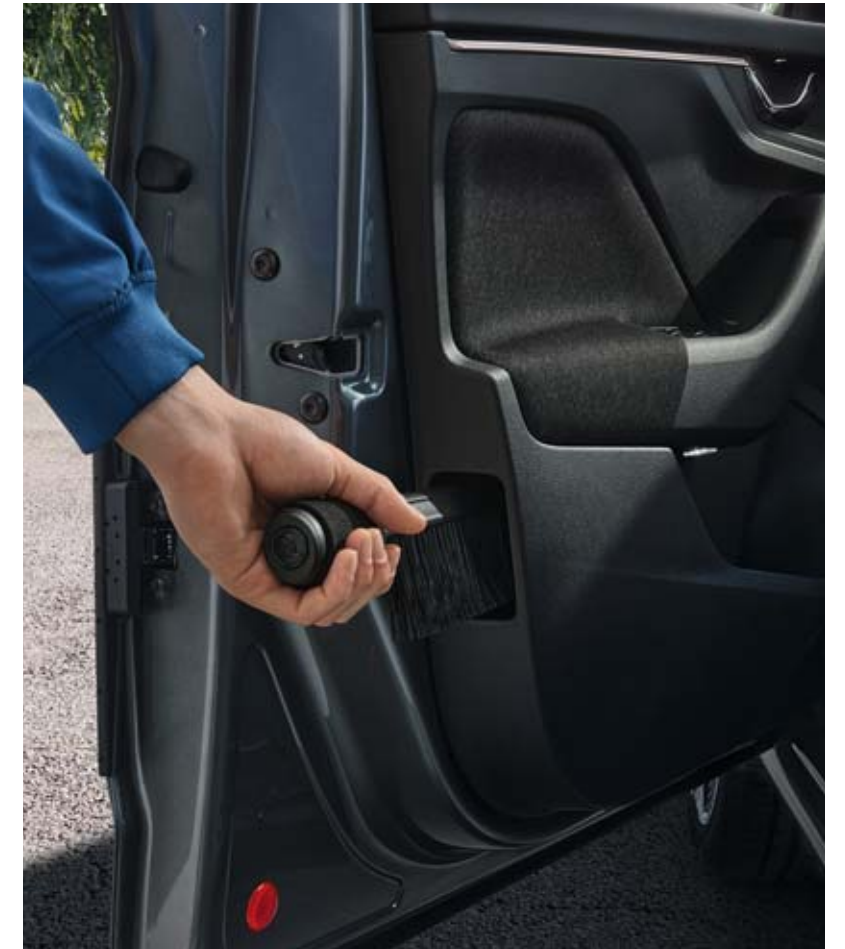
Everyday comfort

It's the details that matter. Enjoy a high level of practicality in any weather with mud flaps, an ice scraper, brush, or umbrella from Škoda Genuine Accessories. Lend your car more style with decorative door sill strips and textile foot mats. On a long trip, your rear passengers can enjoy even more comfort and rest their feet.



Ice scraper

5E0 096 010



Door equipment

3P0 087 600 | umbrella
5E3 096 011 | brush



Decorative door sill strips

657 071 303 | aluminium

Textile foot mats Prestige

- 657 061 270 | black, LHD
- 657 061 270A | black, RHD
- 657 061 270C | red, LHD
- 657 061 270E | red, RHD
- 657 061 270B | copper, LHD
- 657 061 270D | copper, RHD



Textile foot mats Standard

- 657 061 404 | LHD
- 657 061 404A | RHD



“Lounge Step” footrest

000 061 141A



All-weather mat over tunnel

654 061 580

Weather ready

Keep your car interior spotless, whatever the weather. Our all-weather foot mats shield your floor carpeting from water, sleet, and dirt, keeping your vehicle clean and fresh even during bad weather.



All-weather foot mats – grey

- 657 061 502 | front, LHD
- 657 061 502A | front, RHD
- 657 061 512 | rear

All-weather foot mats – red

- 657 061 502F | front, LHD
- 657 061 502G | front, RHD
- 657 061 512C | rear



Never get bored

Enjoy even the longest trips. With the Entertainment pack, you'll have your entertainment right in front of you with two multimedia holders. The Comfort pack adds Smart Holders, hangers, adapters, and even a door panel bin, so you can turn the backseat into your living room sofa.

Comfort pack

000 061 122D

- Smart Holder – multimedia holder
- Smart Holder – hook
- Smart Holder – hanger
- Smart Holder – adapter
- Door panel bin (black)

Entertainment pack

000 061 122K

- Smart Holder – adapter (2 pcs)
- Smart Holder – multimedia holder (2 pcs)



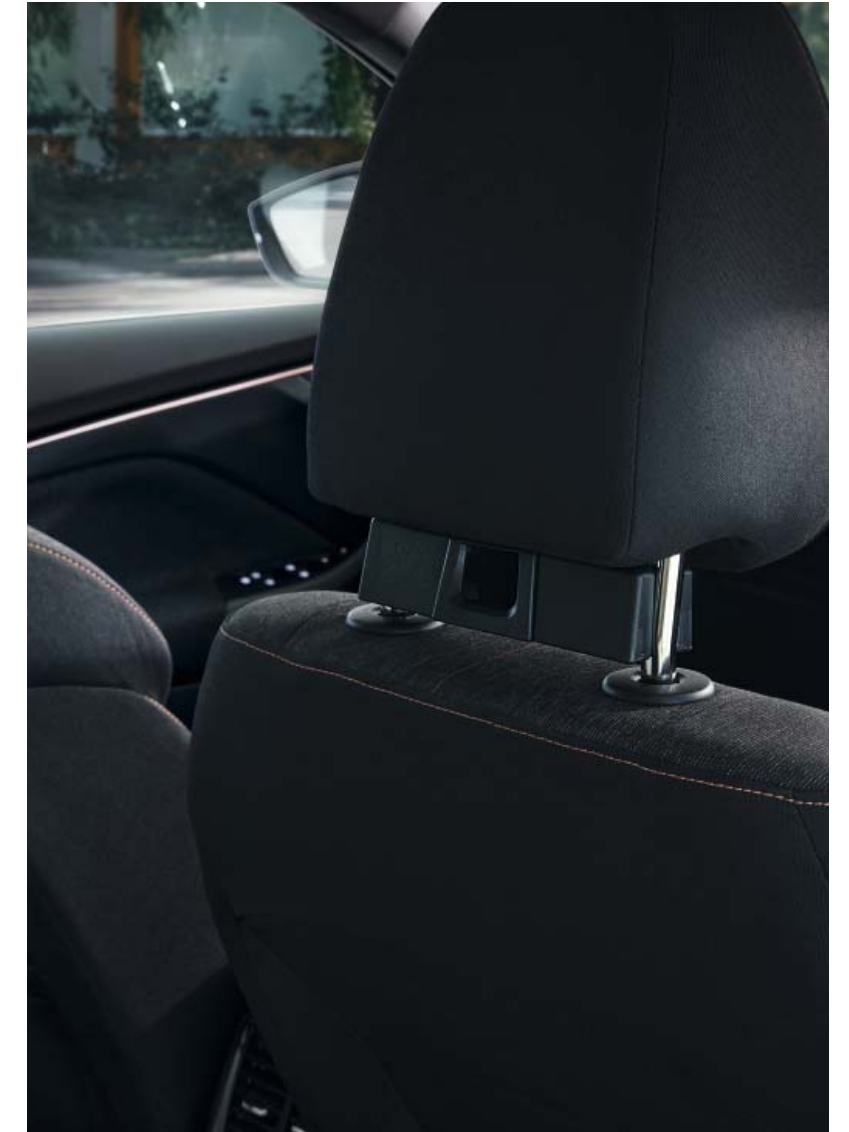
Door panel bin

5JA 061 107 9B9 | black
5JA 061 107 WC4 | beige



Smart Holder – hook

3V0 061 126



Smart Holder

3V0 061 128 | adapter
655 061 128 | adapter for sports seats



Portable coffee maker

000 069 641D



Multimedia holder

000 051 435AD



Connecting cable

6VA 051 445A | USB-C
6VA 051 445B | lightning



Thermo-electric cooling/warming box – 15 l

5L0 065 400

Backseat bliss

Make your rear seats even more enjoyable. Add a cooling box for comfort, keep children safe with child seats, and ensure your pets have a secure space. Provide passengers with pleasant shade and privacy from prying eyes.



Thermo-electric cooling box – 20 l

000 065 400G



KIDFIX i-SIZE child seat*

(15–36 kg, 4-point seat belt)

000 019 906AG

* XP PAD is not included in the product package.



TRIFIX2 i-SIZE child seat

(9–22 kg, 4-point seat belt)

000 019 906AH

Protective pad under child seat

000 019 819A



Dog safety belt

000 019 409A | size S
000 019 409B | size M
000 019 409C | size L
000 019 409D | size XL

Rear seat protection*

3V0 061 680

* The size of the rear seat protection can be adapted to cover just one half of the rear seats.

Sun shades – tailgate and boot side windows

657 064 361 | 3-piece set



Sun shades – rear side windows

657 064 363 | 2-piece set





Boot grille

657 017 221A

Pack like a pro

Packing is a delight when you have smart strategies. Ensure your cargo stays put with a boot grille and protect the loading edge against scratches. Keep everything in order with nets and preserve your boot floor with double-sided carpet. Enjoy a clean and secure packing experience.

**Loading edge
protective foil**

657 061 197A



Loading edge mat

3P0 071 336





Net programme

657 065 110 | grey, basic floor
657 065 110A | black, basic floor
657 065 110C | black, double floor
657 065 110B | red, basic floor
657 065 110D | copper, basic floor



Double-sided boot mat – foldable

657 061 210



Boot dish

657 061 162

Sliding dividing element

000 017 254A

Aluminium partition for boot dish

565 017 254

Double-sided boot mat

657 061 163



Protective boot liner

657 061 160A | basic floor
657 061 160 | double floor



Accessories Wheels

18"



Blade
black metallic matt
7.0J x 18" ET39 for 205/45 R18
654 071 498AD ZG6
654 071 498C ZG6*



Blade
anthracite metallic, brushed
7.0J x 18" ET39 for 205/45 R18
654 071 498AC HA7
654 071 498E HA7*



Blade
silver metallic, brushed
7.0J x 18" ET39 for 205/45 R18
654 071 498AE 8Z8
654 071 498D 8Z8*



Vega
black gloss, brushed
7.0J x 18" ET39 for 205/45 R18
654 071 498AF JX2
654 071 498J JX2*

18"



Crater
anthracite metallic, brushed
7.0J x 18" ET39 for 205/45 R18
654 071 498AA HA7
654 071 498N HA7*



Crater
silver metallic
7.0J x 18" ET39 for 205/45 R18
654 0714 98AB 8Z8
654 071 498L 8Z8*

17"



Kajam
anthracite metallic, brushed
6.0J x 17" ET40 for 205/50 R17
654 071 497AN HA7
654 071 497AA HA7*



Propus
black metallic, brushed
6.0J x 17" ET40 for 205/50 R17
654 071 497AG FL8
654 071 497K FL8*

17"



Geneva
black metallic, brushed
6.5J x 17" ET40 for 205/50 R17
654 071 497AD FL8
654 071 497E FL8*



Geneva
anthracite metallic, brushed
6.5J x 17" ET40 for 205/50 R17
654 071 497AE HA7
654 071 497G HA7*



Geneva
silver metallic, brushed
6.5J x 17" ET40 for 205/50 R17
654 071 497AF 8Z8
654 071 497F 8Z8*



Braga
silver metallic
6.5J x 17" ET40 for 205/50 R17
654 071 497AC 8Z8
654 071 497L 8Z8*

17"



Stratos
black metallic matt
6.5J x 17" ET40 for 205/50 R17
654 071 497AH ZG6
654 071 497 ZG6*



Stratos
silver metallic
6.5J x 17" ET40 for 205/50 R17
654 071 497AK 8Z8
654 071 497P 8Z8*

* black code = wheels without centre caps, available separately / grey code = wheels with chrome/black centre caps

16"



Italia
black metallic
6.0J x 16" ET35 for 195/60 R16
654 071 496AC FL8
654 071 496M FL8*



Italia
silver metallic
6.0J x 16" ET35 for 195/60 R16
654 071 496AB 8Z8
654 071 496L 8Z8*



Montado
black metallic, brushed
6.0J x 16" ET38 for 205/55 R16
654 071 496AH FL8
654 071 496F FL8*

16"



Alaris
black metallic
6.0J x 16" ET38 for 205/55 R16
654 071 496AF FL8
654 071 496A FL8*



Alaris
silver metallic
6.0J x 16" ET38 for 205/55 R16
654 071 496AG 8Z8
654 071 496D 8Z8*



Cortadero
silver metallic
6.0J x 16" ET38 for 205/55 R16
654 071 496AA 8Z8
654 071 496H 8Z8*

16"



Nanuq
black metallic
6.0J x 16" ET35 for 195/60 R16
654 071 496AD FL8
654 071 496C FL8*



Nanuq
silver metallic
6.0J x 16" ET35 for 195/60 R16
654 071 496AE 8Z8
654 071 496B 8Z8*



Nyota
silver metallic
6.0J x 16" ET38 for 205/55 R16
654 071 496AJ 8Z8
654 071 496E 8Z8*

Hub covers 16"



Lhotse
hub covers
4-piece set
for 6.0J x 16" ET40 steel wheels
658 071 456A



Tecton
hub covers
4-piece set
for 6.0J x 16" ET40 steel wheels
657 071 456

Hub covers 15"



Hermes
hub covers
4-piece set
for 6.0J x 15" ET35 steel wheels
657 071 455



May be used with snow chains.

* black code = wheels without centre caps, available separately / grey code = wheels with chrome/black centre caps

Technical Data

Technical specifications	1.0 TSI/70 kW	1.0 TSI/85 kW	1.5 TSI/110 kW
	Turbocharged petrol engine	Turbocharged petrol engine	Turbocharged petrol engine
Engine			
Cylinders/Cubic capacity (cc)	3/999	3/999	4/1,498
Max. performance/Revs (kW/rpm)	70/5,000–5,500	85/5,500	110/5,000–6,000
Max. torque/Revs (Nm/rpm)	175/1,600–3,500	200/2,000–3,500	250/1,500–3,500
Air pollution regulation	EU6EB	EU6EB	EU6EB
Fuel	Petrol, RON min. 95	Petrol, RON min. 95	Petrol, RON min. 95
Performance			
Maximum speed (km/h)	192	202	221 (220)
Acceleration 0–100 km/h (s)	10.8	9.5 (10.1)	8.2
Fuel consumption WLTP (l/100 km) – combined	5.0–5.6	5.1–5.6 (5.3–5.8)	5.4–5.9 (5.3–5.8)
CO ₂ emissions WLTP (g/km) – combined	114–126	115–127 (119–130)	122–133 (120–130)
Power transmission			
Type	Front-wheel drive	Front-wheel drive	Front-wheel drive
Transmission	Manual 5-speed	Manual 6-speed (Automatic 7-speed DSG)	Manual 6-speed (Automatic 7-speed DSG)
Weight			
Kerb weight – with 75 kg driver (kg)	1,201–1,362	1,217–1,385 (1,238–1406)	1,259–1,418 (1,271–1,431)
Payload – incl. driver and extra equipment (kg)	375–490	375–500 (375–489)	375–489 (375–487)
Total weight (kg)	1,600–1,662	1,630–1,685 (1,640–1,706)	1,660–1,718 (1,670–1,731)
Trailer load without brakes (max. kg)	600	600 (610)	620 (630)
Trailer load with brakes – 12% (max. kg)	1,000	1,200	1,250
Further specifications			
Body		Front brakes	Disc brakes with inner cooling and with single-piston floating calliper
Type	5-seater, 5-door, 2-compartment	Rear brakes	Drum brakes; alternatively disc brakes depending on engine version
Turning circle diameter (m)	10.9	Clearance (mm)	149
Chassis		Luggage storage space (max. l)	
Front axle	McPherson suspension with lower triangular links and torsion stabiliser	Without spare tyre, with rear seat backrests – upright/down	467/1,410
Rear axle	Compound link crank-axle	Tank capacity (l)	50

WLTP – World harmonized light-duty vehicles test procedure.
The weights depend on the equipment version of the car.
() Applies to the version with automatic transmission.

Technical specifications and drawings apply to the Essence and Selection versions. The parameters for Monte Carlo cars may differ.
For more information, contact your Škoda partner.

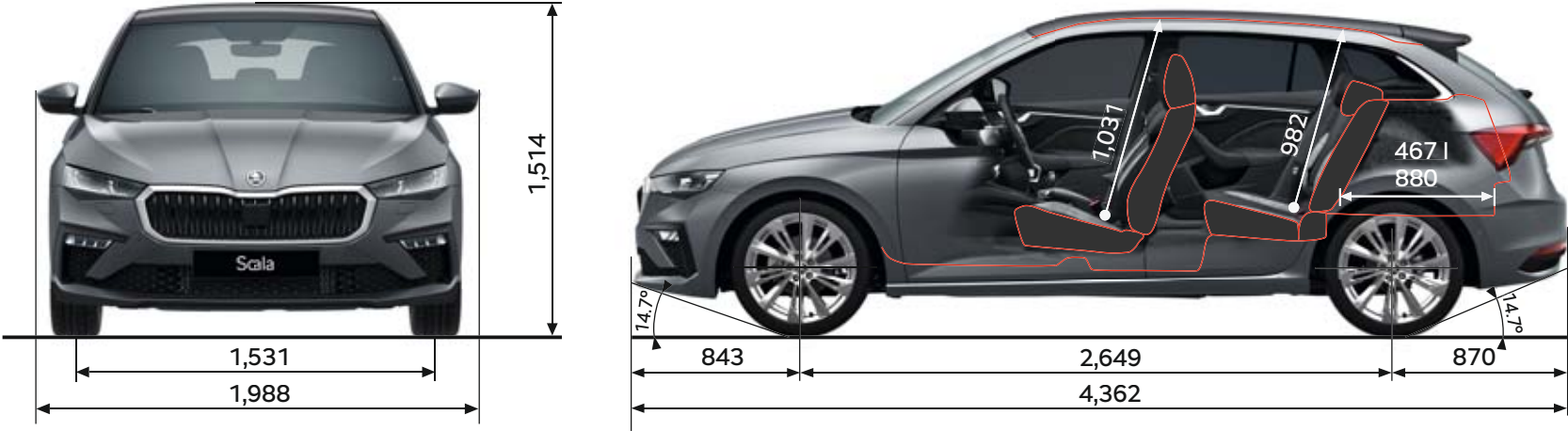


Image disclaimer

The images presented in this catalogue (brochure) are used for illustrative purposes only and are not intended to form part of any contract or warranty. They display pre-series cars and certain illustrations, features, parts and equipment may differ from the actual production cars and from country to country. To get the exact specification of features, parts and equipment, please get in touch with your nearest local Škoda dealer.

If you've enjoyed reading
about it — imagine driving it.
**Call us to arrange
a test drive!**

Your Škoda partner:

04/2025



MyŠkoda

Enjoy full control of your car. Download MyŠkoda and access all necessary services anytime, whether it's driving data, fuel range, lock and unlock, or even where you last parked.



Assembly manuals

Follow the user manuals to install Škoda Genuine Accessories on your car correctly. You can also visit your authorised Škoda Service partner.