



# The Škoda Enyaq

Valid as of August 2025

## Versions

Version		60	85	85x	RS
Battery capacity (gross)	[kWh]	63	82	82	84
Range up to (WLTP)	[km]	444	591	555	569
Max. power	[kW]	150	210	210	250
Power consumption	[kWh/100 km]	15.1	14.7	15.4	15.6
DC charging time (10-80%)	[min.]	24	28	28	26

Range figures are cited as maximum values. Range may vary depending on the trim and body type.

## Key selling points



### MEB platform & super-fast charging

- Rear-wheel drive (60 and 85 versions) or all-wheel drive (85x and RS versions)
- Range up to 591 km
- Charging time from just 24 minutes
- DC charging power up to 185 kW
- New software and hardware to increase efficiency and reduce energy consumption
- Heat pump for effective heating and battery thermal management
- Excellent aerodynamics



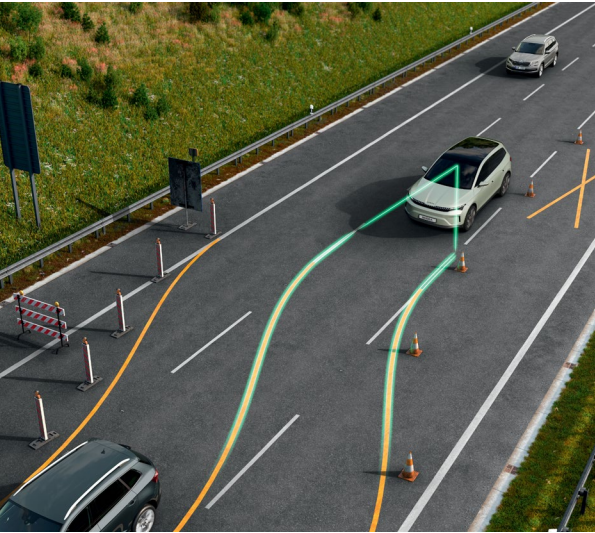
### More digital

- Augmented-reality head-up display
- 5" Digital Cockpit
- 13" Infotainment with navigation and voice control



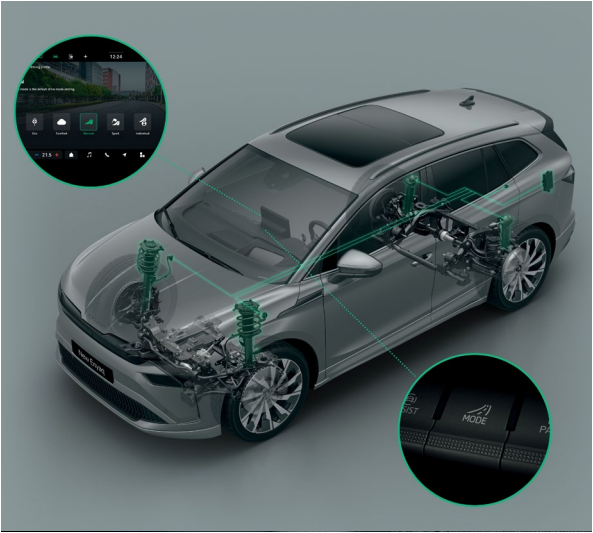
### More light

- LED Matrix beam headlights
- Light Band in the form of a vertical light grille
- LED rear lights with animated indicators



### Assist systems

- Travel Assist 2.6
- Remote Parking and Remote Trained Parking as a part of the Intelligent Park Assist
- Area View



### Comfort

- 3-zone air-conditioning
- DCC – adaptive chassis
- Ventilated and heated front seats with massage function



# Special versions

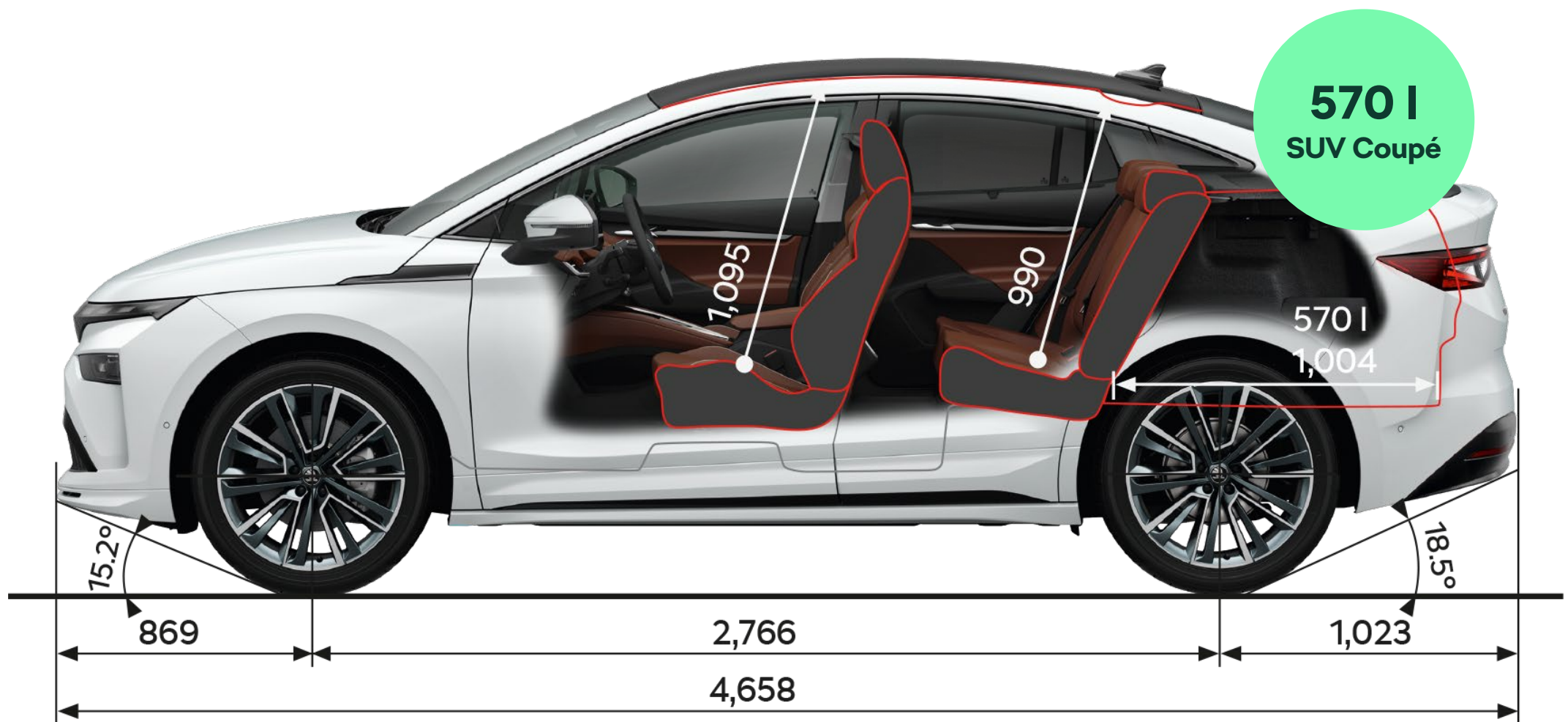
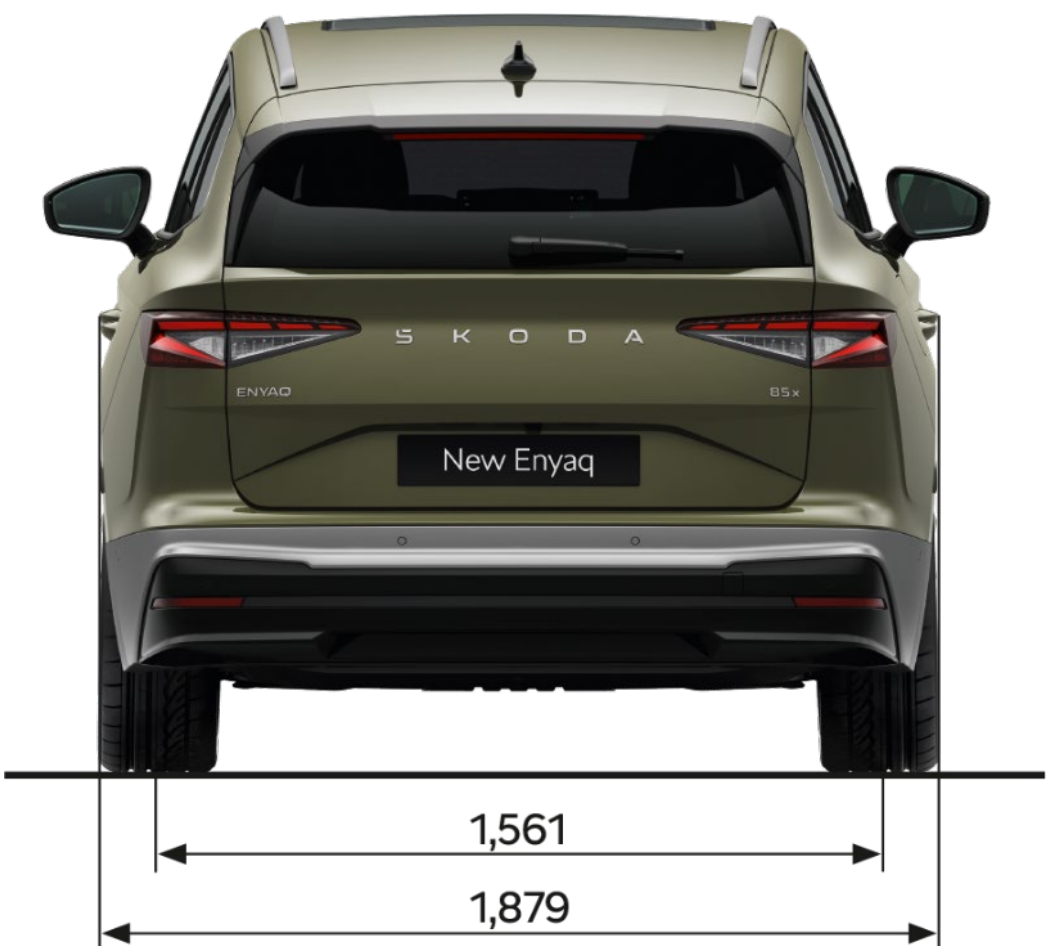
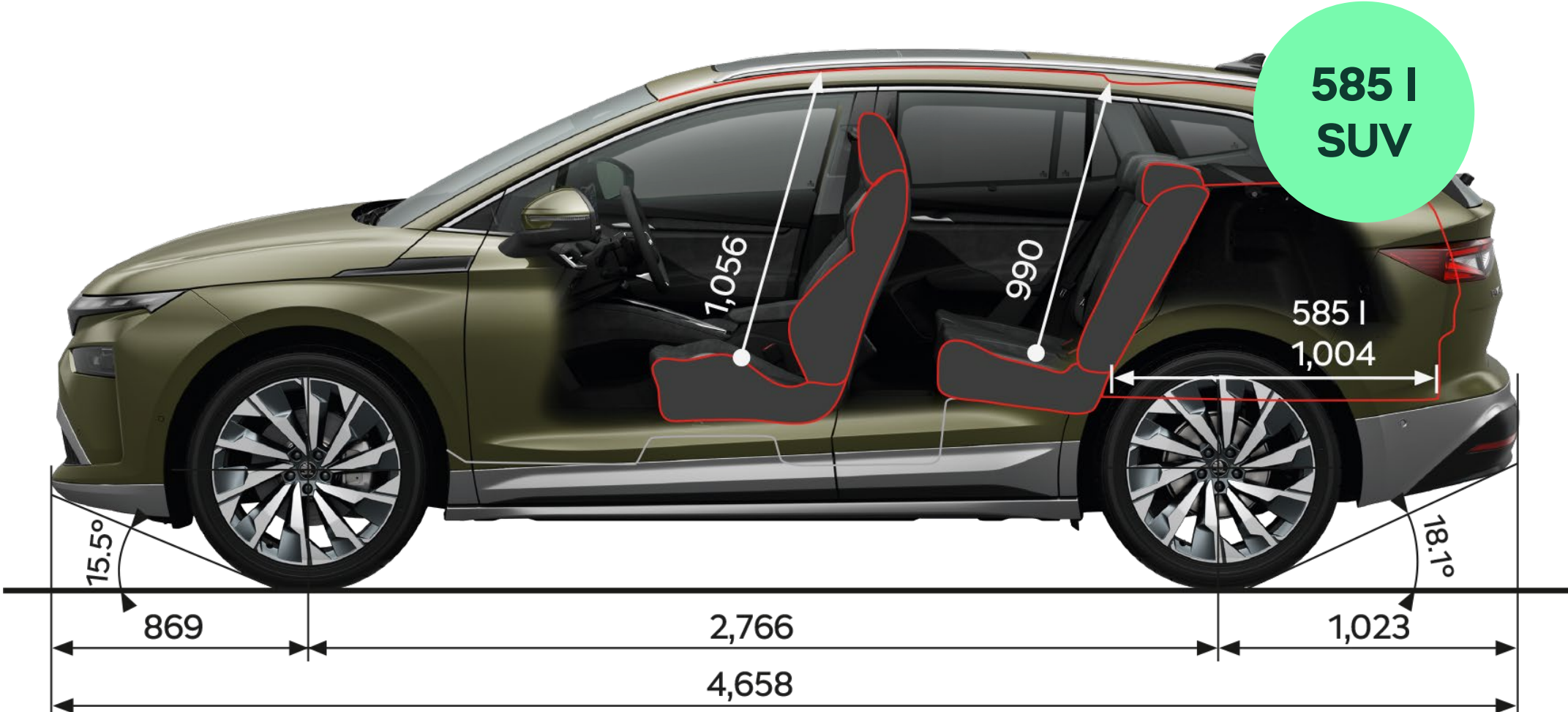
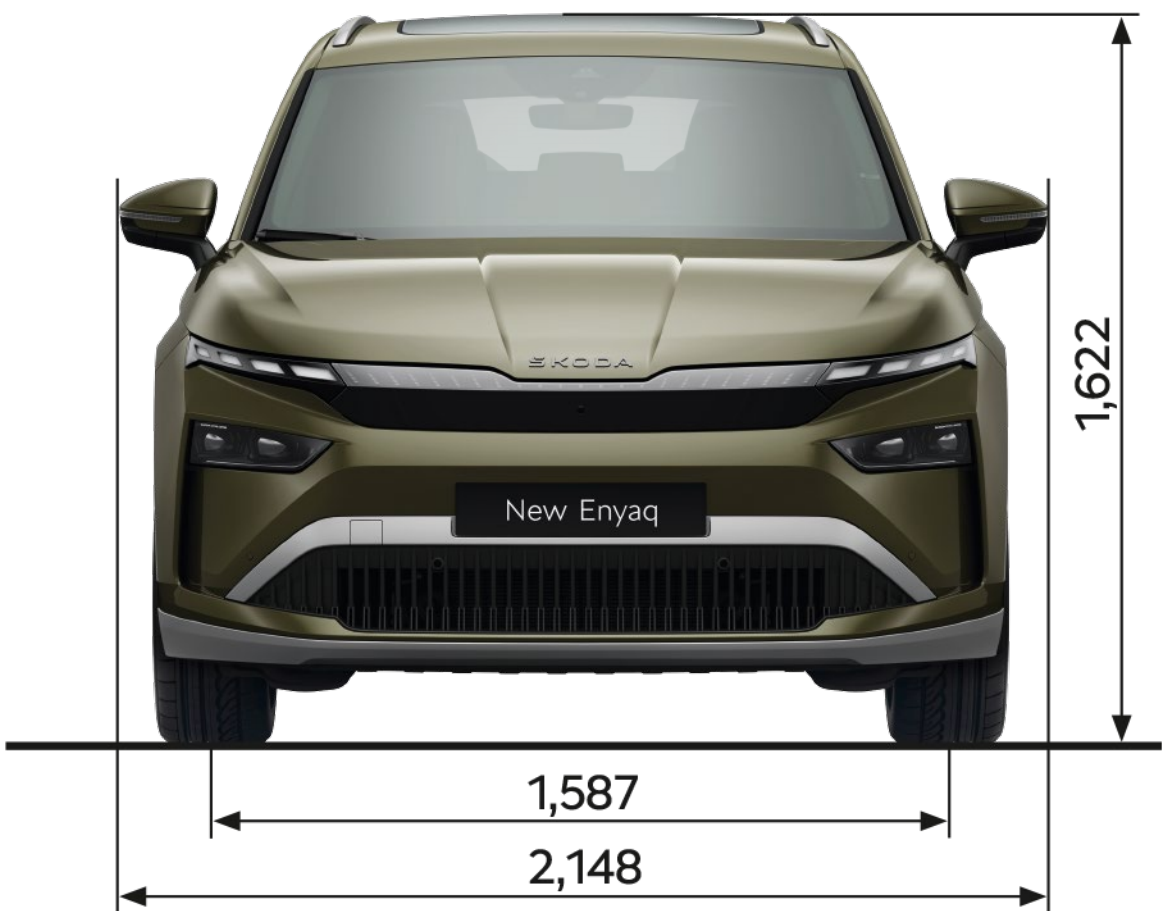


Sportline



RS

# Dimensions

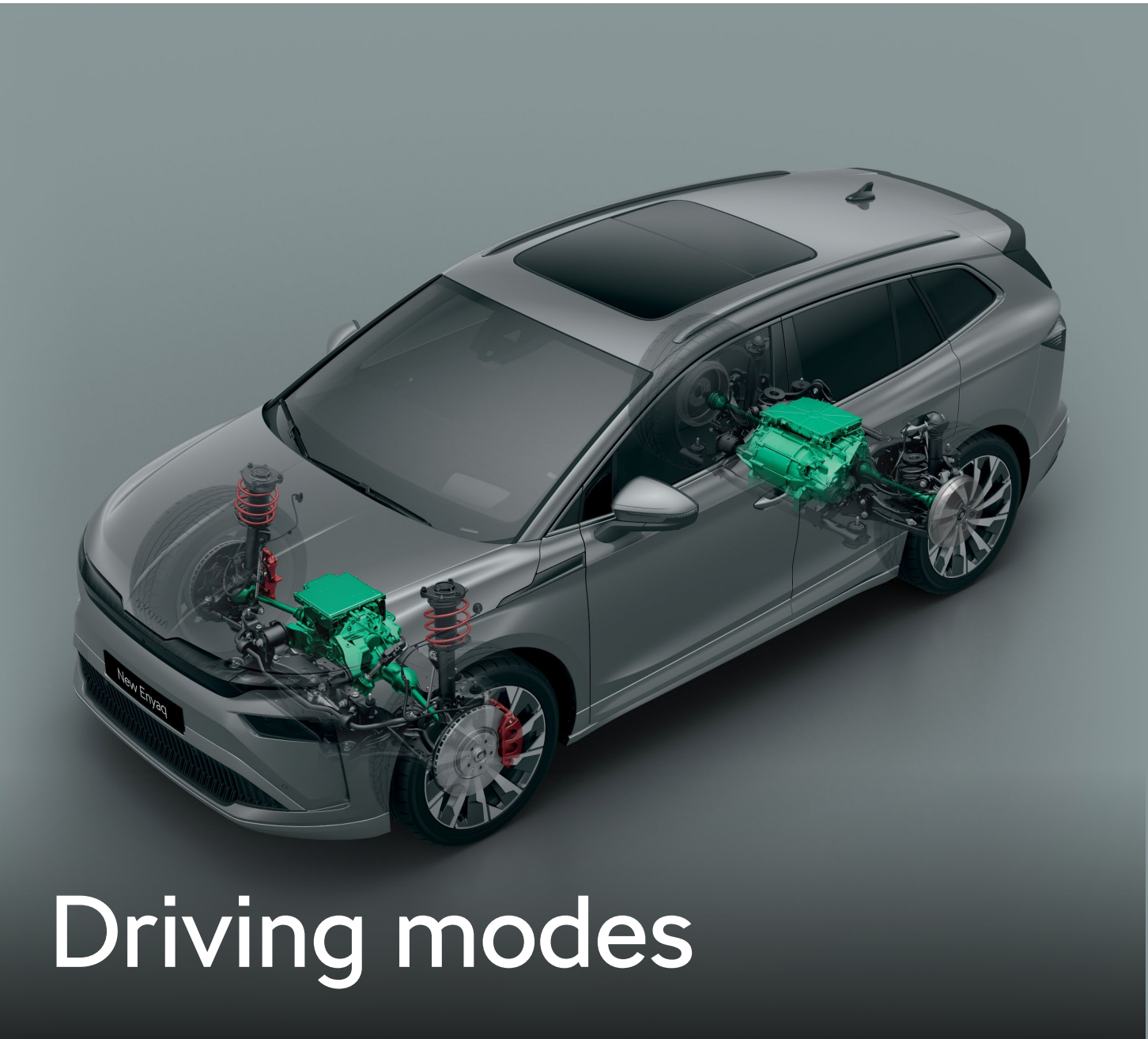


# Highlights



MyŠkoda app

- Prioritise different parameters – comfort, energy economy or driving dynamics
- Traction mode, designed for slippery or unpaved surfaces, available with 4×4 drive
- Mode customisation possible through the Individual mode



Driving modes



Simply Clever

- Remotely start or stop charging, set charge level limits and control the cable lock
- Preconditioning for set departure time, heating of the seats, the steering wheel and the windows
- Automatic authorisation at public charging stations via Plug & Charge

- Phone Box with wireless fast charging (15 W) and active ventilation
- Fast charging front and rear USB-C with power output up to 45 W
- iV Universal Charger – up to 11 kW AC charging almost anywhere
- Virtual Pedal – hands-free boot access
- QR code in luggage compartment